

Wrench Monkey



GROUP 9

William
Wandelt

*Electrical
Engineering*

Rachael
Sak

*Electrical
Engineering*

Matthew
Crespo

*Electrical
Engineering*

Matthew
Trump

*Computer
Engineering*

Reviewers

Professor Maddox
Dr. Aman Beha

Figure List.....	4
Table List.....	5
Chapter 1: Executive Summary.....	1
Chapter 2: Project Description.....	3
Section 2.1: Background and Motivation.....	3
Section 2.2: Past Work.....	3
Section 2.3: Goals and Objectives.....	5
Section 2.4: Features and Functionalities.....	7
Section 2.5: Engineering Specifications.....	8
Section 2.6: Hardware Block Diagram.....	9
Section 2.7: Software Flow Chart.....	10
Section 2.8: Prototype Illustration.....	11
Section 2.9: House of Quality.....	12
Chapter 3: Research and Part Selection.....	13
Section 3.1: Control System Research.....	13
Section 3.1.1: Bang-bang Control.....	13
Section 3.1.2: Proportional - Integral - Derivative Control.....	13
Section 3.1.3: Model Predictive Control.....	14
Section 3.1.4: Reinforcement Learning (RL).....	15
Section 3.1.5: Control System Comparison and Selection.....	15
Section 3.2: Mobile Application & Desktop Website.....	16
Section 3.2.1: LAMP Stack.....	17
Section 3.2.2: MERN Stack.....	18
Section 3.2.3: Stack Comparison and Selection.....	19
Section 3.3: Motors.....	20
Section 3.3.1: Brushed DC Motors.....	20
Section 3.3.2: Brushless DC Motors.....	21
Section 3.3.3: Stepper Motors.....	22
Section 3.3.4: Servo Motors.....	23
Section 3.3.5: Motor Comparison and Selection.....	24
Section 3.4: Tool Detection Sensors.....	25
Section 3.4.1: Resistive Strain Gauge.....	25
Section 3.4.2: Capacitive Load Cell Detection.....	26
Section 3.4.3: Photoelectric Detection.....	27
Section 3.4.4: RFID Detection.....	28
Section 3.4.5: Tool Detection Sensor Comparison and Selection.....	29
Section 3.5: Batteries.....	30
Section 3.5.1: Lithium Ion Battery.....	30

Section 3.5.2: Sealed Lead Acid (SLA) Battery.....	31
Section 3.5.3: Nickel-Cadmium Battery.....	31
Section 3.5.4: Battery Comparison and Selection.....	32
Section 3.6: Line Detection Sensors.....	33
Section 3.6.1: Color Sensor.....	33
Section 3.6.2: Camera Sensor.....	34
Section 3.6.3: IR Sensor.....	35
Section 3.6.4: Line Detector Sensor Comparison and Selection.....	36
Section 3.7: Chassis Base Material.....	37
Section 3.7.1: Wood.....	37
Section 3.7.2: Aluminum.....	38
Section 3.7.3: Plastic.....	39
Section 3.7.4: Carbon Fiber.....	40
Section 3.7.5: Chassis Base Material Comparison and Selection.....	40
Section 3.8: Part Selection.....	42
Section 3.8.1: Chassis Material.....	42
Section 3.8.2: Battery Type.....	43
Section 3.8.3: Motor Type.....	45
Section 3.8.4: Line Detector Sensor.....	46
Section 3.8.5: Tool Detection Sensor.....	47
Section 3.8.6: Microcontrollers & Single-Board Computers.....	47
Section 3.8.6.1: ESP-32S.....	48
Section 3.8.6.2: Raspberry Pi 4 Model B.....	48
Section 3.8.6.3: Arduino Uno R4 WiFi.....	49
Section 3.8.6.4: Microcontroller & Single-Board Computer Comparison and Selection.....	50
Chapter 4: Design Standards and Constraints.....	51
Section 4.1: Project Standards.....	51
Section 4.1.1: Soldering Standard.....	53
Section 4.1.2: Wi-Fi Standard.....	54
Section 4.1.3: Industrial Mobile Robots Standard.....	54
Section 4.1.4: PCB Design Standard.....	55
Section 4.1.5: Lithium Battery Standard.....	55
Section 4.1.6: LED Standard.....	56
Section 4.1.7: C Programming Language Standard.....	56
Section 4.1.8: Python Programming Standard.....	56
Section 4.1.9: Inter-Integrated Circuit (I2C).....	57
Section 4.1.10: Portable and Rechargeable Batteries Standards.....	57
Section 4.2: Project Constraints.....	57
Section 4.2.1: Economic Constraints.....	57
Section 4.2.2: Time Constraints.....	58

Section 4.2.3: Availability Constraints.....	60
Section 4.2.4: Safety Constraints.....	60
Section 4.2.5: Size and Weight Constraints.....	60
Section 4.2.6: Testing Constraints.....	61
Section 4.2.7: Environmental Constraints.....	61
Section 4.2.8: Technical Constraints.....	61
Section 4.2.9: Usability Constraints.....	62
Chapter 5: Comparison of Chat GPT with Other Similar Platforms.....	63
Section 5.1: Chat GPT and Other Similar Products.....	63
Section 5.1.1: A History and Comparison of Chatbots.....	63
Section 5.2: Chat GPT in Education.....	64
Section 5.2.1: Benefits of Chat GPT in Senior Design.....	65
Section 5.2.2: Drawbacks of Chat GPT in Senior Design.....	66
Section 5.2.3: Conclusion.....	67
Chapter 10: Administrative Content.....	68
Section 10.1: Budget and Financing.....	68
Section 10.2: Bill of Materials.....	69
Section 10.3: Project Milestones for Senior Design 1 and Senior Design 2.....	70
Section 10.4: Work Distribution.....	71
Section 10.4.1: Team Leader.....	71
Section 10.4.2: Discord/Group Chat.....	71
Section 10.4.3: Estimated Table of Work Distributions.....	72
Appendix A.....	73

Figure List

Figure 1: Hardware Block Diagram	9
Figure 2: Software Block Diagram	10
Figure 3: Several prototype sketches showing components and sizes	11
Figure 4: House of Quality	12

Table List

Table 1: Engineering Specifications	8
Table 2: Control System Comparison	16
Table 3: Stack Comparison	20
Table 4: Motor Properties Comparison	25
Table 5: Tool Detection Sensors Comparison	29
Table 6: Battery Comparison	33
Table 7: Line Detection Sensor Comparison.....	36
Table 8: Chassis Base Material Comparison.....	41
Table 9: Wood Selection.....	43
Table 10: Battery Selection.....	45
Table 11: Motor Selection.....	46
Table 12: Camera Module Selection.....	47
Table 13: Tool Detection Selection.....	47
Table 14: Microcontroller & Single-Board Computer Selection.....	51
Table 15: Estimated Budget.....	68
Table 16: Bill of Materials	69
Table 17: Research and Writing Milestones.....	70
Table 18: Design and Prototype Milestones.....	70
Table 19: Work Distribution	72

Chapter 1: Executive Summary

In modern industrial environments, the integration of autonomous and semi-autonomous robots has contributed significantly to advancement in operational efficiency and production speed. These robots act like assistants, helping with tasks that would otherwise require a lot of time and effort from human workers. By taking on roles such as tool distribution and retrieval, these tools can free up time to allow workers to focus on the tasks at hand, which increases efficiency. This shift not only boosts productivity but also improves overall workplace satisfaction by simplifying the production process.

Particularly, the utilization of such robots for tool distribution and retrieval stands as an innovative application, which can streamline workflow processes and increase productivity within manufacturing facilities. Common situations, such as a busy factory floor where workers are constantly moving between workstations to fetch tools would be dramatically improved. Otherwise, it's a time-consuming process that can lead to delays and other inefficiencies. With semi-autonomous robots handling this task, tools can be delivered promptly and accurately, and ensures that workers have what they need exactly when they need it. This seamless integration of technology into the workflow not only saves time but also minimizes disruptions, allowing manufacturing and assembly operations to run smoothly.

Our project aims to create a smart robot system that's ideal for moving tools around different workstations in an industrial application. It will be capable of moving smoothly and accurately, easily finding its way around to deliver tools where they're needed in the factory. Our aim in automating this part of manufacturing is to make things run smoothly and get as much work done as possible for a given block of time.

This system implements a simple program of automation, navigating its surroundings via a marked line track on the ground to deliver requested tools promptly. The sophistication of the system lies in its ability to adapt to changing conditions on the ground. It can avoid obstacles and communicate with the user to notify of any issues that occur. This level of automation not only reduces the need for human intervention but also minimizes the risk of errors or accidents, creating a safer and more efficient working environment.

Unlike conventional systems, our robot is engineered to service multiple workstations seamlessly, optimizing resource allocation and minimizing downtime. This aspect of our design is crucial for ensuring maximum efficiency in a dynamic manufacturing environment. Instead of being limited to a single workstation, our robot can move between different areas of the floor as needed, servicing multiple users depending on the tools required. This flexibility helps to

minimize bottlenecks and ensures that production can continue uninterrupted, even in the face of unexpected challenges.

Central to the functionality of our robotic system is its discernment of tool placement. Through a combination of weight sensing and RFID technology, the robot possesses the capability to identify where tools are placed. This enables it to not only locate requested tools efficiently but also detect and alert users of misplacements. If a tool is detected in the wrong location, the system is designed to alert users visually and through text on the workstation, preventing potential disruptions and ensuring that tools are always readily available when needed.

The significance of such automation lies in its impact on efficiency and resource utilization within industrial settings. By reducing the need for manual tool retrieval and distribution, our robotic system liberates human capital to focus on high-value tasks, thereby enhancing overall productivity and operational agility. This shift in focus from manual labor to more strategic activities helps to unlock the full potential of the workforce, driving innovation and driving the company forward.

Moreover, the centralization of tool management via a web app within a controlled robotic framework facilitates the efficiency gains. By combining tool inventory and distribution under a unified system, redundancies and inefficiencies inherent in manual tracking and management are eliminated. This results in streamlined operations, reduced downtime, and optimized resource allocation.

Implementing our robotic system successfully necessitates consideration of various design parameters. Object collision recognition must work to demonstrate capabilities in line with what would be expected in an industrial setting.. Additionally, robust communication protocols are essential for seamless integration with the control system and accompanying tool status information. These requirements ensure that our system can operate smoothly and effectively in a real-world manufacturing environment, without causing disruptions or delays.

The benefits of an operational system like this are easy to imagine. Beyond immediate gains in operational efficiency, the implementation of semi-autonomous tool-distributing robots promises long-term benefits in terms of scalability and adaptability in the industrial landscape. Modifications can be made using the existing framework to service other industries, such as hospitals for food delivery.

In conclusion, the advent of semi-autonomous robots for tool distribution can create a new era of efficiency and optimization in industrial environments. Through strategic design and implementation, our robotic system will attempt to change the game of workflow management, by facilitating high levels of productivity and operational efficiency. Using the power of automation, a smarter, more efficient factory can be made.

Chapter 2: Project Description

Section 2.1: Background and Motivation

For decades, robots have been used in various industries to automate repetitive tasks and improve overall efficiency. The scope of robotic applications is vast, ranging from precision driven manufacturing of microchips, to the optimization of logistic processes in sorting centers and automated assembly lines streamlining production in various sectors. While the impact of robotic applications have been profound in manufacturing and assembly lines, the potential for robotics in addressing challenges within shared workspaces has yet to be fully explored.

In these specific environments, where seamless collaboration between workers is of utmost importance, the need for effective tool organization has become increasingly apparent. Shared workspaces in fields from manufacturing or repairs to research and development, often take on the issue of disorganization and tool misplacement. The traditional methods of tackling this issue, such as manual tracking of tools through sign out sheets have proven inadequate in the evolving demands of modern work environments. This inadequacy becomes even more apparent as the number of workers within these shared spaces increases, necessitating a new dynamic solution.

Recognizing these challenges, our senior design project uses robotics and automation to address the persistent problem of tool organization in shared workspaces. The focus goes beyond increasing efficiency, extending to the broader challenges of accessibility within said environments. Our innovative solution takes the form of a toolbox robot, designed to seamlessly integrate into collaborative work environments, revolutionizing the way tools are managed.

Wrench Monkey, our envisioned toolbox robot, represents more than just a technical solution, but a leap forward in the evolution of collaborative workspaces. By redefining the dynamics of tool organization, our project aspires to contribute to the modern day workspaces that are not only efficient, but also adaptive, inclusive, and technologically advanced. As shared workspaces continue to evolve, our senior design project stands as a pioneering effort to shape the future through integration of robotics and intelligent automation.

Section 2.2: Past Work

Toolboxes are a staple in every workplace, as well as in many homes. They vary in size and look, however, for the most part they are all similar in that they have very basic features and are solely a way to store tools. When deciding which toolbox to purchase, there are many things to consider such as size, portability, durability, security in the form of a lockable product, and the inclusion or lack of drawers. While standard toolboxes are sufficient for most environments, there

are cases where a more technologically advanced toolbox could be beneficial. There are a few companies that have created toolboxes that contain more technologically advanced features; however, these are often not easily accessible to the average consumer.

There are a handful of toolboxes on the market with varying levels of automation and inventory tracking. Most of these products seem to focus on checking out tools to hold employees accountable and prevent the loss of items. One such product is a smart toolbox created by Snap-On in 2012 called the Level 5 ATC Tool Control System. This product was developed for the utility industry and military type settings as a way to track and control access to tools. One benefit listed is that should a tool be left behind somewhere such as inside a jet engine, it could pose not only an extensive amount of damage but also a safety hazard, so having the ability to confirm that all tools have been returned to their designated spot would provide an additional layer of safety. Features included in this toolbox are controlled access to the contents, item tracking and logging, and alert systems for errors.

To even unlock the toolbox, a card has to be scanned, such as an employee ID card. This allows the company to allow only certain people access to the tools. Once the toolbox is unlocked, the user can remove whichever tools they need, and the system has an optional feature where you can log which workspace you will be using the tools in. After closing the drawer, a camera mounted inside the drawer will compare the contents to the control image taken when the toolbox was first programmed and it will list on the touch screen how many tools were taken, where they were removed from, as well as the part numbers. The touch screen also has options to search for specific tools, as well as a way to see who has checked out each tool. When returning the tool, there is a way to notify the system if it is broken or lost, as well as if the tool is out for calibration or needs to be calibrated soon to ensure accuracy. Should a tool be returned to the wrong drawer or spot, the system will alert the user that there is an issue. This tracking and logging system can be very beneficial to users as it helps the users keep everything organized and keep track of tools that are checked out by other users.

Another toolbox on the market is the RFID Smart Toolbox. This device was created by Rovinj Technology, and it uses tools that have RFID tags on them in order to register if the tool is in the toolbox or not. This product has an inventory feature that will alert the individual taking inventory of what tools are missing within 3 seconds. It can also alert users if there is a tool that has not been returned in the allotted time, and will also then identify which person has said tool. A unique feature about this device is that it is smaller than the previously mentioned tool chest and is also rechargeable such that it can be physically taken to a workstation as opposed to being large and stationary, requiring the users to come to it to check out and return items.

The company Tool Raptors has also created a smart toolbox. Their product has four different operating modes, allowing the user to customize it to best suit their needs. The most basic mode is smart access only, which restricts who can unlock and access this toolbox. Another mode adds manual tool tracking where the user would tell the system which item they have taken. There is also the option to use RFID or sensors in order to automatically track which tools are taken and missing from the toolbox. This allows the user to customize the toolbox to best fit their needs. The toolbox is also equipped with a touchscreen and will send an alert when there is unauthorized access, as well as keep a log of who attempts to access the system.

Tramontina also has their own Smart Tool Cabinet, which is equipped with similar features to the others such as a touchscreen and restricted access, requiring a keycard to access the tools. It also uses a digital scanning system in order to track which tools are present in the toolbox. One thing that makes this product unique is the fact that it will automatically open and close the drawers the user needs.

Another such example comes from the Olpin Group's motorized toolbox product. This toolbox is specifically designed to transport tools through a workshop, a feature that aligns with our objective of semi-autonomously moving a toolbox through a workshop's space.

One of the safety features of the Olpin Group's toolbox is also relevant to our project. The built-in emergency stop feature ensures safety of users in the immediate serviceable area. This feature is similar to our project's implementation of obstacle collision avoidance, with an emphasis on user safety, and we aim to incorporate similar mechanisms in our design.

Another feature of the Olpin Group's toolbox is the "one drawer at a time" mechanism. This design allows only one drawer to be opened at a time, effectively preventing the toolbox from tipping over due to imbalance. This design element enhances user safety and efficiency, and we plan to integrate a similar feature in our toolbox.

Each of these projects serve as significant inspiration for our project. When combined in the Wrench Monkey Toolbox, they exemplify the blend of functionality, safety, and user-friendly design that we aspire to achieve with our project. By studying and learning from such past products, we aim to create a toolbox that not only meets but exceeds the standards set by these products, ultimately contributing to a safer and more efficient workspace.

Section 2.3: Goals and Objectives

The overarching goal of this project is to provide a product that increases shared workspace productivity and tool management. To tackle this central goal, a

product will be designed and constructed that has the ability to indicate tool locations and transport desired tools.

For the goal of tool transportation, our first objective is to design and construct a frame on top of which a toolbox will be placed. More specifically, a drive system will be selected that allows Wrench Monkey to traverse a work environment autonomously. For example, if there are inclines in the workspace, Wrench Monkey should not need to be pushed to get over the incline. Since some work spaces can be in environments with gravel and other rough terrain, either treaded tires or tracked tread will be used.

To achieve autonomy, color sensors will be used to guide Wrench Monkey to the desired workstation by tracing the path to each of the workstations using different tape colors to identify the destination. Multiple color sensors will be used simultaneously in order to detect when Wrench Monkey is going off the path traced by the colored tape. To get to the various workbenches, the Wrench Monkey should be able to start from some central position that is set and then choose the path that will lead it to the desired location. Because there will be other obstacles in a workshop, sensors will also be attached to the frame to detect objects that could potentially obstruct the path of Wrench Monkey. When there is an object obstructing the path of Wrench Monkey, an audio system will alert users that its path has been blocked. For autonomy, a stretch objective would be to include voice recognition to call Wrench Monkey and/or to request specific tools. To accomplish this, would most likely require the use of artificial intelligence and signal processing, thus making this objective a stretch objective.

To fulfill the tool organization goal various objectives have been set to allow for new users to quickly find available tools for their tasks. Our first objective is to implement a pressure sensing system that will be able to detect whether a tool has been placed in one of the locations in Wrench Monkey. Wrench Monkey will have a WI-FI module so that the tool detection system can interface with a web application to keep track of the tools that are available—this functionality can then be used to prevent Wrench Monkey from moving to another workstation without the requested tool. Similarly, if a tool is needed, but is being used, Wrench Monkey will keep track of who is using it by requiring a user login for the web application. In addition, the web application will have the ability to request tools based on the task that is being completed by a user; for example, if some task A requires a hammer and a 10mm socket, the user will be able to select the task A request which will prompt Wrench Monkey to highlight the required tools. Wrench Monkey will also be equipped with a lighting system such that the requested tool(s) will be highlighted to make tool identification faster. A stretch objective for the tool organization aspect of the project would be to determine whether a tool has been placed in the correct location. This would be done using either computer vision or an identification scheme such as barcodes; however, using barcodes could require a barcode scanner for each tool which would consume more power and require more space to be used for the sensor placement.

In terms of Wrench Monkey powering, it will be able to move to the designated outlet for charging when it is low on battery and/or at the end of the work day. Additionally, Wrench Monkey should be powered by off-the-shelf battery hardware that can be swapped when overall capacity has been sufficiently decreased. Finally, in regard to the Wrench Monkey powering, a stretch objective would be creating a charging dock so that users do not have to plug Monkey Wrench into a power outlet.

Section 2.4: Features and Functionalities

There are multiple different features and functionalities that this project will include in order to reach the goals previously mentioned. The first functionality that the Wrench Monkey will have is the ability to be called to a workstation. Using a web app, a user can request the Wrench Monkey to come to them from either its central starting location, or from another workstation. It will also be able to alert users if the tool that they have requested is already in use, and therefore unavailable. The Wrench Monkey is also going to be designed to be flexible and able to adapt to any work room through simply moving the colored paths. As the toolbox is programmed to follow the path, changing the path in which it should take to a location or moving it from one room to another would not be difficult as all that needs to change is the location of the colored tape paths. The toolbox will also be equipped with sensors so that it will be able to detect if there is any object obstructing its path, and it could alert the users.

Another feature of the Tool Monkey is its ability to enhance tool organization. Using LEDs to highlight the requested tool can help the user find the correct tool more quickly and easily. This would be especially helpful in the case of needing a specific size of wrench, screwdriver, or other tool without having to go through multiple options first. This toolbox also has the ability to keep track of what tools are present and missing, as well as which workstation the missing tool was removed from the drawer. This is done by using pressure sensors as well as requiring the users to log in to the website to request the tools. Additionally, the website will have the ability to create custom tool combinations for recurring tasks. This would work through saving a list of tools needed for a specific task, and when a user wants to complete that task they could simply select the name of it on the website instead of having to select each individual tool that is required. This could help streamline the process as the website will keep track of what tools are needed for the project so the user may not need to remember specific sizes, and they also don't have to spend time selecting each item.

Another function of the Wrench Monkey is that it will automatically return to its designated charging spot when the battery drops below 10%. This is beneficial as users do not need to keep track of the battery life as closely as it will return on its own, alerting them to its low power. It also prevents the toolbox from

becoming stranded at a single workstation or location and having to be manually moved to an outlet to be charged.

Section 2.5: Engineering Specifications

The following requirements laid out were based on analysis of potential cost, feasibility, practicality, known size and weight, and intuition. Both software and hardware considerations were made when determining these desired parameters

Motorized Carrier	
Carrier Weight (exc. battery)	< 7 kg.
Carrier Weight Capacity	< 15 kg.
Power Consumption	< 10W idle
Speed	> 0.5 m/s
Battery Runtime	> 5 hours mixed use
Dimensions (LxWxH)	0.6m x 0.3m x 0.2m
Maximum Working Area	40 sq. m
Toolbox	
Weight (exc. battery)	< 20 kg.
Dimensions (LxWxH)	0.6m x 0.3m x 0.9m
Tool Capacity	> 5 tools
Overall Project	
Dimensions (LxWxH)	0.6m x 0.3m x 1.1m
Total Weight	< 40 kg.
Communication Frequency	2400 MHz
Voltage Input	12V
Obstacle Detection Range	> 1m
Color Detection Range	380-700nm
Cost	< \$1000

Table 1: Engineering Specifications

Section 2.6: Hardware Block Diagram

The block diagram below outlines each of the modules and specific pieces of hardware we expect to require with our current design plans.

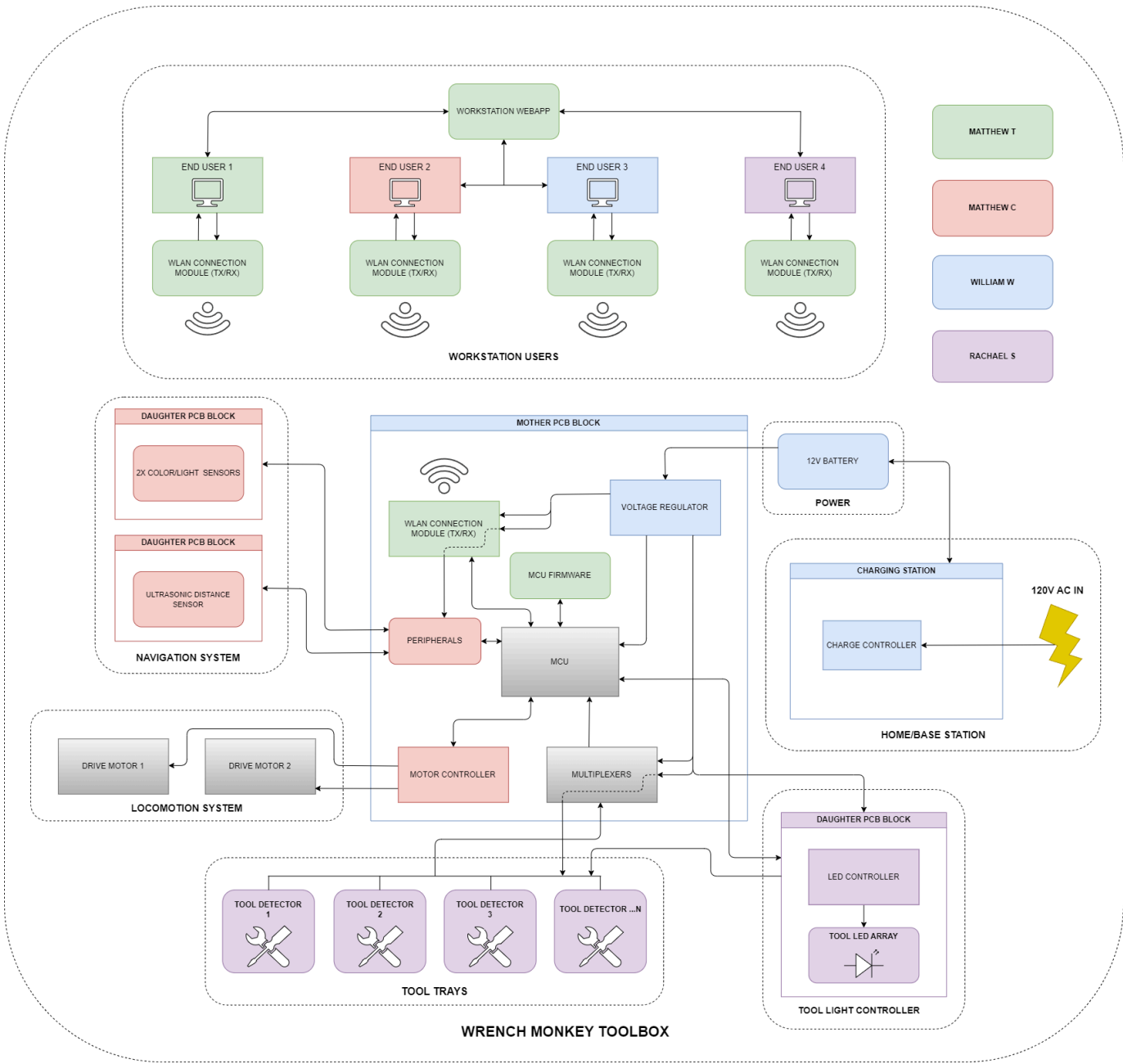


Figure 1: Hardware Block Diagram

Section 2.7: Software Flow Chart

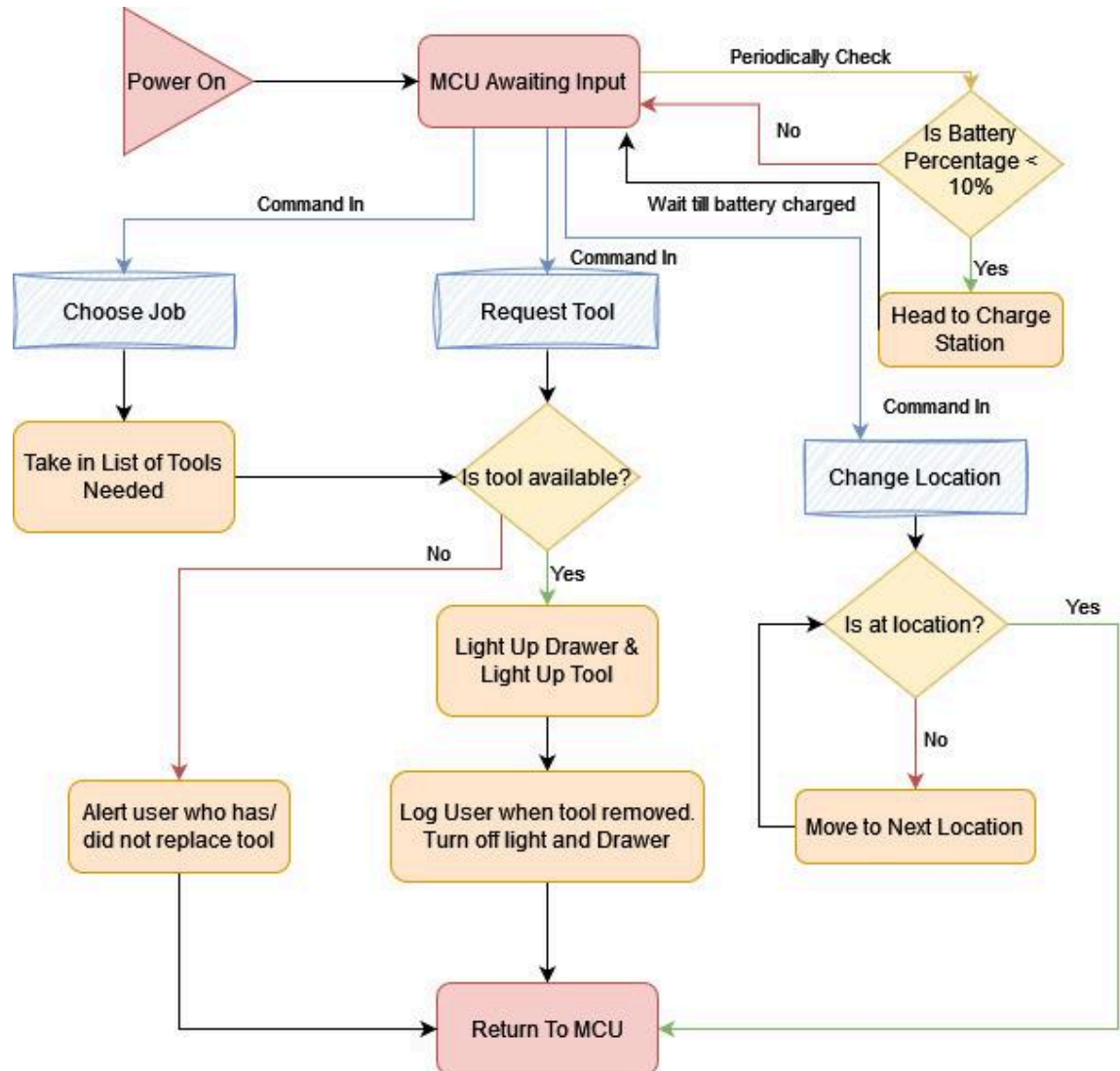


Figure 2: Software Block Diagram

Section 2.8: Prototype Illustration

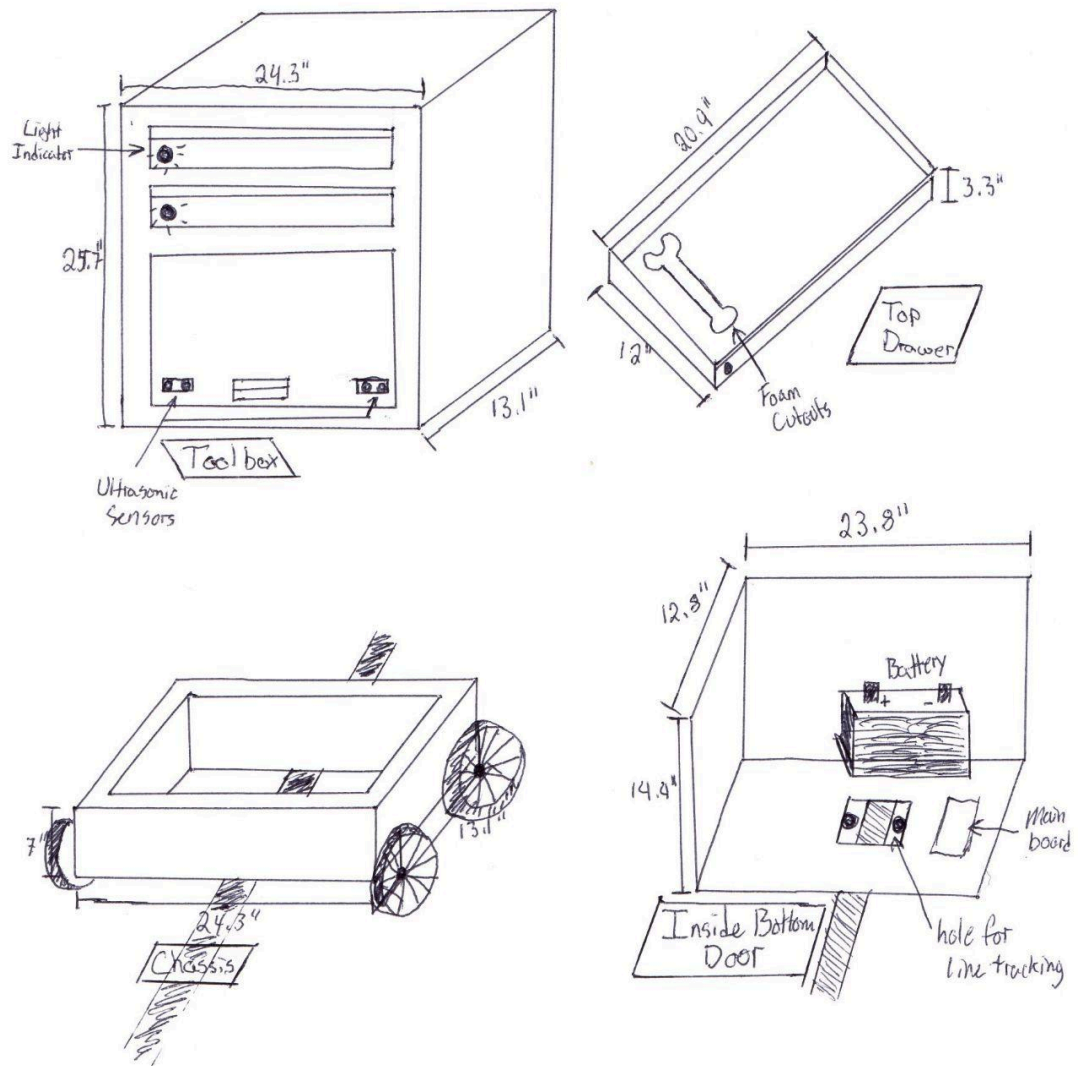


Figure 3: Several prototype sketches showing components and sizes

Section 2.9: House of Quality

Correlations							
Positive	↑						
Negative	↓						
No Correlation	○						
Relationships							
Positive	↑						
No Effect	○						
Negative	↓						
Direction of Improvement							
Maximize	▲						
Target	◇						
Minimize	▼						

		Column #					
		1	2	3	4	5	6
Direction of Improvement		▼	▲	▼	▼	▼	▲
Direction of Improvement	Engineering Requirements	Weight	Path Following Accuracy	Manufacturing Cost	Size	Response Time	Tool Detection Accuracy
	Customer Requirements (Explicit and Implicit)						
	▲ Affordability	○	↓	↑	○	↓	↓
	▲ Battery Life	↓	○	↑	○	↓	↓
	▲ Ease of Use	↓	↑	↑	↓	↑	↑
	▲ Reliability	○	↑	↑	○	↑	↑
	▲ Toolbox Speed	↓	↓	↑	↓	↑	○
	▲ Tool Capacity	↑	○	↑	↑	○	○
	▲ Ease of Setup	↓	↑	↑	↓	○	↑
	▲ Tool Tracking	○	↑	↑	○	○	↑
	▲ Path Obstruction Alert	○	↑	↑	○	↑	○
Target		<40kg	85%	<\$1000	0.6m x 0.3m x 1.1m (LxWxH)	1 second	85%

Figure 4: House of Quality

Chapter 3: Research and Part Selection

Section 3.1: Control System Research

Due to the need for Wrench Monkey to travel to various workstations that could be oriented in a plethora of ways, color tape will be used for guidance so that the path of Wrench Monkey can be easily rearranged. To follow the colored tape, a control technique must be selected to make the system robust to some obstructions such as debris in the path of Wrench Monkey. The different control techniques consist of bang-bang control, PID control, model predictive control (MPC), and reinforcement learning.

Section 3.1.1: Bang-bang Control

Bang-bang control represents one of the most straightforward techniques in robotic control systems. Its simplicity lies in its binary nature: it operates with only two control states—on or off. This means that when the system's conditions breach a predetermined threshold, the control signal is activated, initiating a response in the system. For instance, in the context of a line-following robot like Wrench Monkey, one motor could be instructed to accelerate while the other decelerates when the robot veers off course, thereby correcting its trajectory. This is accomplished via line detection with integrated color sensors.

This control scheme finds most applications in systems that implement rudimentary control responses, as is the case in simple line-following robots. Despite its simplicity, bang-bang control effectively serves as a functional control mechanism for robots, and is often employed in initial testing phases due to its ease of implementation. However, the caveat of its simplicity lies in the tendency to produce somewhat erratic movements, resulting in less smooth operation compared to more sophisticated control methods.

In the case of Wrench Monkey, while bang-bang control may ensure basic line following capability, its inconsistent movements may lack the precision smoothness desired in optimal performance scenarios on a work floor. Therefore, while it serves as an adequate starting point for experimentation and initial testing, the ultimate objective will transition to more advanced control strategies. These more refined (and therefore, more complicated) techniques offer superior line-following precision and smoother movement, improving the overall system greatly.

Section 3.1.2: Proportional - Integral - Derivative Control

PID control, standing for Proportional, Integral, and Derivative control, represents a sophisticated approach to regulating systems, and is applicable to line following in robotics. Its effectiveness lies in its ability to dynamically adjust control signals based on three crucial factors: the current error, the accumulated error over time,

and the rate of change of the error. The general equation describing PID control is shown below:

$$u(t) = K_p e(t) + K_i \int e(t) + K_d$$

Proportional control forms the core of the PID algorithm, exerting a control influence proportional to the current error. This means that larger errors result in more significant control adjustments, thereby enabling rapid response to deviations from the desired state, such as veering off course of a line. The integral control aspect complements this by addressing persistent errors that may not be corrected solely by proportional control. By accumulating the error over time, integral control ensures that steady-state errors are mitigated, which leads to improved overall accuracy and stability.

Additionally, the derivative component of PID control serves to dampen rapid changes in the error, thereby reducing overshoot and enhancing system stability. By adjusting the control output proportionally to the rate of change of the error, the derivative term effectively moderates the system's response, preventing it from oscillating or overshooting the desired setpoint. In the case of Wrench Monkey, this prevents the erratic movement that would otherwise be seen with Bang-Bang control schemes.

Although PID controllers inherently have a higher level of complexity compared to simpler control schemes like bang-bang control, their versatility and effectiveness make them practical and desirable in numerous applications. By carefully tuning the proportional, integral, and derivative parameters, PID controllers can be optimized to meet specific design criteria, such as minimizing overshoot, reducing settling time, and improving overall system responsiveness. This adaptability and precision render PID control highly suitable for tasks requiring precise control, dynamic response, and robust performance.

Section 3.1.3: Model Predictive Control

Model Predictive Control (MPC) is a useful control system methodology capable of optimizing and achieving project objectives while respecting system constraints. Unlike traditional control methods, such as the earlier discussed PID control or Bang-Bang control, MPC employs a predictive approach, which utilizes pre-programmed mathematical models to forecast system behavior and select optimal control signals accordingly based on what has already been navigated. This predictive capability distinguishes MPC from PID control, as it considers future system states based on current information, enabling more strategic decision-making over a greater distance of travel.

An example application of MPC can be seen in autonomous robotic systems, where it utilizes mathematical models of the system to optimize parameters like power consumption or travel time, all while ensuring adherence to operational constraints. This ability to anticipate future outcomes allows MPC control schemes to make decisions that balance the desired movement behavior effectively.

Continuing this, MPC is composed of multiple control techniques, each of which can be tailored to conform to specific system dynamics (like line following), yet follows a common predictive framework based on the modeling of the system. This versatility allows MPC to address multiple control challenges, including multivariable systems (such as navigation on inconsistent terrain), without substantially increasing the required computational complexity.

However, the implementation of MPC has inherent limitations. Notably among these is the reliance on accurate mathematical models of the system, which requires accurate modeling efforts to ensure reliable predictions. Additionally, the predictive nature of MPC based on math has a higher computational cost compared to simpler control methods, as it involves predicting future behavior and optimizing the control actions based on these predictions. As a result of this, since MPC offers unparalleled predictive capabilities and versatility, its effectiveness hinges on the quality of the system model and computational resources available for implementation.

Section 3.1.4: Reinforcement Learning (RL)

This approach to control a plant is interesting in that the controller must “learn” the desired control law, also called the policy, to achieve the desired system behavior. Additionally, there are two categories of RL approaches that can be used: model-free and model-based RL. In model-free RL, the policy is learned solely by interacting with the environment. On the other hand, model-based RL has a predetermined model for the system that is used to predict the state transitions and the rewards of the system to determine the optimal actions to be taken.

In previously made line following robots, RL value iteration algorithms have been used to learn the desired policy.

Section 3.1.5: Control System Comparison and Selection

In the paper by Saadatmand, et al., it was shown that the p-controller performed similarly to the RL methods. That being said, PID control or MPC will be implemented for Wrench Monkey because reinforcement learning will require time to train and will increase the chance for coding mistakes to be introduced without providing a significant improvement to the performance. Additionally, RL

is not as easily tuned to have specific behavior because instead of directly controlling parameters, the agent's reward system would have to be adjusted until the agent shows the desired behavior.

Although bang-bang control is the easiest of the controller schemes described, it will most likely be only used for initial testing, but then be replaced with a more sophisticated control technique such as PID or MPC since they will allow for smoother behavior when tuned properly.

Before trying MPC, PID control will be implemented because it does not require a mathematical model. This is an advantage over MPC due to the need to model the plant behavior accurately so the controller is able to make predictions and optimize controller outputs that fulfill any constraints that are set.

Control Technique	Implementation Complexity	Mathematical Modeling Required	Tunability
Bang-Bang	Lowest	No	Some tunability
PID	Low	No	Medium tunability
MPC	Medium	Yes	High tunability
RL	High	No	Some tunability

Table 2: Control System Comparison

Section 3.2: Mobile Application & Desktop Website

Unlike traditional robots that rely on a physical user interface for interactions, Wrench Monkey adopts a modern approach by using a mobile application and a desktop website for control and management. This allows users to remotely command the robot's movements, access tool inventory, request specific tools, and receive real-time updates on tasks and progress. This type of setup usually requires a full stack application to function correctly.

A full stack application refers to a software development approach where both the front end and back end, or client side and server side, components are developed together to create an integrated system. The front end consists of user interface elements such as web pages, mobile app screens, and graphical elements. Meanwhile, the back end side consists of the server, database, and application logic that manages data and processes requests.

Section 3.2.1: LAMP Stack

The LAMP Stack, an acronym for Linux, Apache, MySQL, and PHP, represents a popular beginner full stack development approach that is perfect for building dynamic and interactive websites and applications. LAMP stack was one of the first open source software stacks for the web and is still a common way to deliver web applications as sites like WordPress and Drupal still run on it.

Firstly, the foundation of the LAMP stack is the operating system Linux. As a free and open source operating system that has been around for more than two decades, Linux provides a solid foundation for hosting web applications. Its widespread adoption in web servers means there is an abundance of documentation available, allowing developers to customize their server setups according to their specific requirements. Renowned for its stability and security features, Linux stands as a very popular choice for server deployments in the LAMP stack ecosystem. A key advantage is its compatibility with diverse hardware and software configurations, offering flexibility and scalability to meet varying project needs.

Secondly, Apache is the web server software that handles HTTP requests and delivers the web assets making it accessible to anyone in the public domain. To illustrate this, consider a scenario when a user inputs a URL to access a website's home page. Apache then processes this request, locating the corresponding HTML page, typically named index.html, and then sends it back to the user's web browser for viewing. This seamless handling of requests and delivery of web pages shows Apache's primary role in facilitating user access with web applications within the LAMP stack. The Apache web server is further emphasized by its open source nature, which makes it very customizable giving it a very feature experience.

Next, MySQL serves as the relational database management system providing a robust platform for storing and managing application data. Most of the time, this database management system is communicated with over command line giving it an older style, but there have been efforts to create user friendly graphic interfaces such as phpMyAdmin making it more intuitive for developers. Regardless, it is able to organize structured data efficiently by using the SQL or Structured Query Language capabilities to perform complex queries. One of the key strengths of MySQL is in its ability to handle large volumes of data giving it an ability to run complex websites and distribute data across multiple servers, accommodating future growth.

Lastly, PHP serves as the dynamic scripting language in the LAMP stack. This language works seamlessly with Apache to facilitate the creation of dynamic web pages. Since you cannot use HTML alone to perform dynamic processes like pulling data out of a database, PHP provides the necessary functionality by allowing developers to embed PHP code directly into HTML pages. This type of language is designed for efficiency, by extending existing web development

paradigms such as object oriented programming, procedural programming, and functional programming. It allows for server-side processing once integrated in apache giving thousands of uses in website development such as handling form submissions, interacting with databases, and building interactive and data-driven web experiences.

To recap, Linux provides a stable and secure operating system for hosting web applications. Apache serves as the web server software handling HTTP requests. MySQL is the relational database management system that organizes and manages structured application data with SQL queries. Finally, PHP is the dynamic scripting language that facilitates the creation of interactive web pages.

Section 3.2.2: MERN Stack

The MERN stack, an acronym for MongoDB, Express, React, and Node, represents another popular choice for full stack application development. In today's time, MERN stacks are used extensively by developers and companies worldwide, especially in e-commerce, social media, and data analytics. This allows developers a versatile and efficient platform for building modern web applications with an enhanced streamlined development process. In my experience, MERN stacks make it incredibly easy to produce IOS and Android applications based on the web experience due to the Express and React framework which will be discussed in detail further.

Firstly, MongoDB acts as the document database within the MERN stack. MongoDB is a very well known NoSQL database so it works opposite of the LAMP stack. Instead of using tables to separate data within the database like MySQL does, MongoDB uses collections which are groups of BSON, or Binary JavaScript Object Notation, files. Moreover, this allows Mongo to store large amounts of data, handling terabytes of data efficiently. Unlike traditional databases, MongoDB provides a powerful query language allowing for the retrieval and manipulation of data swiftly.

Second, Express makes up the server-side web framework in the MERN stack. It wraps HTTP requests and responses, making it easy to handle routing and mapping URLs to server-side functions. As a minimalist and flexible Node.js web application framework, Express provides a robust set of features for developing both web and mobile applications. One of its key strengths is the range of built in middleware that enables developers to enhance the request-response cycle, making it possible to streamline the development of APIs. Developers can define routes using HTTP methods such as GET, POST, PUT, and DELETE, handling the routing logic efficiently.

Next, React represents the top tier of the MERN stack, providing a framework for building dynamic client-side applications in HTML. React is a front end JavaScript library developed by a software engineer at Meta, which enables developers to create interactive user interfaces efficiently. It is known for its component based architecture allowing developers to create reusable UI components improving code organization and maintainability. One of the key features of React is its virtual DOM, or Document Object Model, implementation which optimizes rendering by only updating necessary parts of the UI. This leads to faster rendering speeds, especially in applications with dynamic content.

Lastly, the Node is its own framework that runs Express within it, forming the backend foundation of the MERN stack. Node.js is a runtime environment that allows developers to run JavaScript code on the server-side. When combining Node and Express, developers can easily make scalable and efficient server-side applications that handle HTTP requests. Node.js also has a vibrant ecosystem with a wide range of npm, or Node Package Manager, modules and libraries which allows for seamless addition of functionality and new tools.

Section 3.2.3: Stack Comparison and Selection

When developing the user interface portion of the Wrench Monkey project, picking the correct full stack development is crucial. The choice between LAMP and MERN stacks significantly impacts the performance and functionality of the application.

The LAMP stack, composed of Linux, Apache, MySQL, and PHP, has been a go-to solution for web development for many years. It offers a stable and robust environment, with Linux providing a secure operating system foundation, Apache serving as a reliable web server, MySQL handling data management efficiently, and PHP enabling dynamic content generation.

On the other hand, the MERN stack, composed of MongoDB, Express, React, and Node.js, represents a modern and dynamic approach to full stack development. MongoDB's NoSQL database structure allows for flexible data handling, Express streamlines the server-side development, React facilitates interactive and responsive user interfaces, and Node.js enables efficient server side processing.

For the Wrench Monkey project, considering the emphasis on real-time updates, remote control functionalities, and a dynamic user interface, the MERN stack offers many advantages over the LAMP stack. React's component-based

architecture aligns well with the need for reusable and interactive UI components, while Express allows for the easy transferability of content between web and mobile applications streamlining the development process.

Stack	Development Experience	Scalability	Performance	User Interface Flexibility
LAMP	Established, Abundant Docs	Scalable for medium sized apps	Good Performance	Limited UI libraries, Python for dynamic content
MERN	Modern, Growing Community	Scalable for large apps	High Performance	Rich UI libraries, React for dynamic content
Stack	Front End	Web Server	Database	Back End
LAMP	JavaScript	Linux/ Apache	MySQL	PHP/PERL/Python
MERN	React (JavaScript)	Node	MongoDB	Express

Table 3: Stack Comparison

Section 3.3: Motors

Section 3.3.1: Brushed DC Motors

Brushed DC motors offer several advantages for robotic propulsion on the ground, primarily due to their simplicity of operation. These motors can be easily driven using a simple analog DC voltage from a battery, or any other power source with sufficient current capability, requiring minimal additional circuitry for basic functionality. This simplicity makes brushed DC motors particularly attractive for applications where ease of integration and operation are prioritized, allowing for simple integration and reduced complexity in system design.

Furthermore, brushed DC motors are known for their robustness and durability, thanks to their simple construction and straightforward design. As a result, brushed DC motors can withstand harsh operating conditions, ensuring consistent performance over extended periods. This reliability is important in ground-based robotic systems where uptime and continuous operation is essential.

However, brushed DC motors also have several limitations that must be considered. One notable drawback is their limited efficiency and lifespan compared to other motor types, such as brushless DC motors. The presence of

brushes within the motor introduces friction and wear, leading to eventual degradation of performance and reliability over time. This limitation therefore requires regular maintenance and replacement of brushes to ensure continued operation, adding to the overall operational cost and complexity of the system.

Additionally, without an additional reduction gearbox, the output RPM of brushed DC motors is too high (on the order of hundreds or thousands) for certain applications, including the Wrench Monkey. This high RPM output can limit the motor's suitability for tasks requiring precise control or heavy load handling, necessitating additional mechanisms such as gearboxes to achieve the desired output RPM/torque. The inclusion of such a gearbox introduces additional drawbacks. A motor with sufficient torque and no gearbox would be too large, heavy, and power-hungry for the Wrench Monkey, compromising its mobility and efficiency. Moreover, brushed DC motors generally exhibit limited torque output with direct drive applications, especially in smaller sizes, further constraining their utility for applications demanding high torque requirements. In summary, while brushed DC motors offer simplicity of operation, reliability, and durability, they also come with limitations such as limited efficiency, lifespan, and torque output. Careful consideration of these factors is essential when selecting brushed DC motors for ground-based robotic propulsion, ensuring compatibility with project requirements and operational constraints.

Section 3.3.2: Brushless DC Motors

Brushless DC (BLDC) motors offer several advantages and disadvantages when used for robotic movement purposes. On the positive side, BLDC motors are known for their high efficiency, which translates to longer operating times and reduced energy consumption compared to brushed DC motors. Additionally, BLDC motors have a longer lifespan due to the absence of brushes, which reduces friction and wear within the motor. This durability is particularly advantageous in robotic applications where longevity and reliability over extended periods is crucial, such as industrial use.

Moreover, BLDC motors are capable of delivering higher power and torque, making them well-suited for applications requiring greater propulsion force, such as moving heavy loads in the Wrench Monkey project. These performance characteristics enhance the overall capabilities and versatility of ground-traversing robotic systems, enabling them to navigate in industrial environments effectively.

However, utilizing BLDC motors for movement also comes with some drawbacks. One notable drawback is the requirement for specialized electronic speed controllers (ESCs) to control the motor's speed and direction entirely. These ESCs add complexity to the overall system design, require additional circuitry, and add an additional point of failure, which increases the overall cost and complexity of the robotic system.

Furthermore, BLDC motors may introduce electromagnetic interference (EMI) issues due to the rapid switching of currents within the motor windings. This interference can affect nearby electronic components and sensors, especially since wireless RF communication is in use for the project, which can potentially impact the overall performance and reliability of the system. Shielding or filtering measures may be necessary to mitigate these effects, which will add further complexity to the system design.

Despite these challenges, the advantages of BLDC motors, such as their high efficiency, durability, and power output, generally make them a preferred choice for many ground-based robotic propulsion applications. With proper design and implementation, BLDC motors can significantly enhance the performance and capabilities of robotic systems such as the Wrench Monkey, enabling them to tackle a wide range of tasks efficiently and reliably.

Section 3.3.3: Stepper Motors

Stepper motors present both advantages and limitations when utilized for robotic movement systems. One notable advantage of stepper motors is their suitability for applications requiring high precision movement. Unlike other types of motors, stepper motors move in discrete steps, allowing for precise control over position and velocity. This characteristic makes them well-suited for tasks that demand accurate positioning, such as robotic arms or CNC machines.

Additionally, stepper motors typically exhibit high torque output, especially at low speeds. This high torque capability enables stepper motors to effectively drive mechanisms with significant resistance or inertia, making them suitable for applications involving heavy loads or demanding terrain. The ability to generate high torque at low speeds enhances the stability and reliability of ground-based robotic systems, which ensures consistent performance in different environments.

However, stepper motors also have important limitations that need to be considered when designing the system. One such limitation is their relatively lower maximum RPM compared to other types of motors, such as brushed or brushless DC motors. This lower RPM can restrict the speed at which a robotic system can operate, potentially impacting its overall efficiency and responsiveness, especially in applications requiring rapid movement or higher-speed traversal like expected with Wrench Monkey.

Moreover, stepper motors require precise control electronics to operate. Unlike some other types of motors, such as brushed DC motors, which can be controlled using purely DC voltage, stepper motors rely on specialized drivers to precisely control step sequences and motor movement. This requirement for dedicated control electronics adds complexity to the system design and generally increases overall cost and complexity, reducing reliability of the system.

Despite these limitations, the precision, high torque output, and suitability for applications requiring precise movement make stepper motors a strong choice for ground-based robotic propulsion applications such as Wrench Monkey. With proper design and implementation, stepper motors can effectively perform the required tasks with high accuracy and efficiency.

Section 3.3.4: Servo Motors

Servo motors offer distinct advantages when used for robotic movement and control on the ground. One significant advantage of servo motors is their precision movement control, which is facilitated by closed-loop feedback systems via integrated rotary encoders, which in turn provide accurate positional information. This feedback mechanism enables servo motors to achieve precise movement and maintain desired positioning and velocity of whatever is attached, making them well-suited for applications requiring high levels of accuracy, such as robotic manipulation and positioning systems.

Additionally, servo motors often exhibit high torque output relative to their compact size, due to reduction gearboxes attached to the physical motor itself. This combination of compactness and torque makes servo motors suitable for applications where space is limited, and a substantial force is required, such as in small-scale robotic platforms like the Wrench Monkey, where heavy loads must be transported. The ability to deliver significant torque in a compact form factor enhances the versatility of ground-based robotic systems that employ their use in the design.

Another advantage of servo motors is their simplicity of operation, as they do not require additional drive circuitry for basic functionality. Unlike some other types of motors, such as stepper motors or brushless DC motors, which rely on specialized control electronics, servo motors can be operated using a simple analog DC voltage. This straightforward operation makes integration into a system simple and reduces the complexity of the overall system design, making servo motors an attractive choice for applications where simplicity and ease of use are important. The ability to operate with minimal additional circuitry enhances the versatility of servo motors, allowing them to be easily incorporated into a wide range of robotic systems, including the Wrench Monkey, with minimal hassle or complexity.

However, servo motors also present certain limitations that need to be considered when designing a robotic system. Like stepper motors, a major limitation is their lower maximum RPM compared to other types of motors, such as brushed or brushless DC motors. This limitation can impact the speed at which a robotic system can move, potentially affecting its overall performance and responsiveness.

Moreover, there exists a trade-off between the RPM and torque capabilities of servo motors. While servo motors are capable of delivering high torque,

increasing the RPM necessary for faster movement decreases torque output for the same size, due to gearbox reduction ratios being changed. This trade-off requires careful consideration to strike a balance between speed and torque of Wrench Monkey, ensuring that the system can move quickly enough and can effectively handle heavy loads as required by the engineering specifications.

With this, servo motors offer precise positional control, high torque output, and compact size, making them well-suited for various ground-based robotic propulsion applications. However, their limitations in terms of maximum RPM and the need to balance speed with torque must be carefully managed to ensure optimal performance and efficiency in robotic systems like the Wrench Monkey.

Section 3.3.5: Motor Comparison and Selection

In the development of the Wrench Monkey project, the selection of servo motors was the clear choice due to their superior performance across several key criteria. Most importantly among these factors is the servo motor's exceptionally high torque capacity, which is a critical attribute for effectively moving heavy loads – a primary requirement for the Wrench Monkey's design. With its gearbox-dependent torque output, the servo motor provides the necessary power to maneuver substantial weights with ease and precision, ensuring the Wrench Monkey can operate correctly.

Precision movement is another important requirement in the functionality of the Wrench Monkey, particularly in the navigation aspect. Here, servo motors stand out through their integration of rotary encoder feedback systems, enabling precise control over rotational movements. This feature is a necessity in facilitating accurate navigation and manipulation, ensuring that the Wrench Monkey operates with precision in its intended environment.

Ease of control was also an important aspect, as it significantly influences the practicality and usability of any motor technology. Servo motors excel in this regard by requiring only analog voltage inputs for power, simplifying the control process significantly compared to BLDC or stepper motors. This ease of control streamlines integration efforts and minimizes complexities when designing the system.

Furthermore, the compact size and lightweight nature of servo motors align with the Wrench Monkey's design objectives, where space optimization and portability are a primary concern. Unlike the other discussed motor technologies, servo motors offer a favorable balance of performance in terms of RPM/torque output, and form factor, enabling the construction of a compact chassis without compromising on power or functionality. This ensures that the Wrench Monkey remains agile and adaptable across diverse operating conditions, maximizing its utility and practicality, especially in varying industrial environments.

In contrast, the alternate motor technologies were found lacking in one or more critical areas essential for the successful realization of the Wrench Monkey project. Whether it be insufficient torque output or RPM, limited precision, cumbersome control mechanisms, or excessive size and weight, these shortcomings showed the suitability of servo motors for meeting the requirements of the Wrench Monkey's design specifications. Through their combination of high torque, precision, ease of control, and compact form factor, servo motors emerge as the optimal choice. The table below compares the qualitative characteristics of each motor type considered.

Motor Type	RPM	Torque	Precision	Ease of Control	Size
Brushed DC	High	Low	Low	Easy	Large
BLDC	High	Medium	Low	Complex	Medium
Stepper	Low	High	High	Complex	Large
Servo	Varies	High	High	Easy	Small

Table 4: Motor Properties Comparison

Section 3.4: Tool Detection Sensors

Section 3.4.1: Resistive Strain Gauge

Utilizing resistive strain gauges for detecting tool presence in a slot within a toolbox offers several advantages. Firstly, these strain gauges are relatively simple to integrate into the toolbox design, requiring minimal additional components since it is a purely resistive measurement solution. Their straightforward implementation streamlines the manufacturing process and reduces overall costs, making them a cost-effective solution for tool detection applications like in the Wrench Monkey.

Additionally, resistive strain gauges are desirable because of their low cost, making them accessible for a wide range of applications, notably tool detection in toolboxes. This affordability enhances their suitability for applications where economics and overall pricing are concerned.

Moreover, resistive strain gauges offer flexibility in terms of available shapes and rigidity of the gauge itself, which can accommodate different toolbox designs and configurations. Whether integrated into flexible slots or rigid compartments, the strain gauges can be purchased to fit specific dimensions and requirements given their widespread availability.

Additionally, resistive strain gauges provide reliable and repeatable detection of tool presence within the toolbox, ensuring proper inventory management can

work with the toolbox software. Their sensitivity to strain variations enables detection of even small tool movements or displacements.

However, despite their advantages, resistive strain gauges have limitations that need to be considered. For instance, their sensitivity to external factors such as temperature, humidity, or repeated mechanical stress can affect their accuracy and reliability over time. As such, proper calibration and maintenance may be required to ensure consistent performance and functionality in the long term.

With this, resistive strain gauges offer a simple, cost-effective, and flexible solution for detecting tool presence in a slot within a toolbox. Their ease of integration, low cost, flexibility, and reliable performance make them a practical choice for enhancing organization and efficiency in toolbox management applications.

Section 3.4.2: Capacitive Load Cell Detection

Using capacitive weight detection sensors for tool presence detection is another potential option in the project. One notable advantage is the sensitivity of capacitive sensors to weight variations, regardless of material type, enabling detection of tools within the toolbox. This high level of sensitivity allows for accurate inventory management, ensuring that missing tools are quickly identified and located.

Additionally, capacitive weight detection sensors offer a non-contact method of detection, which minimizes wear and tear on both the tools and the sensors, prolonging their lifespan and reducing maintenance requirements. Moreover, the absence of physical contact eliminates the risk of damage or deformation to delicate tools or the sensor itself, protecting the parts and extending longevity and functionality over time.

Furthermore, capacitive weight detection sensors can be easily integrated into the toolbox design, offering flexibility in terms of placement and configuration. Whether mounted directly beneath the toolbox compartments or embedded within the toolbox structure, these sensors can be customized to fit various dimensions and layouts, making them desirable for their versatility while designing the toolbox.

However, despite their advantages, capacitive weight detection sensors have limitations that need to be considered. One potential drawback is their susceptibility to environmental factors such as temperature and humidity variations, which have a direct impact on capacitance, along with electromagnetic interference, which may affect their accuracy and reliability. Additionally, calibration may be required to ensure consistent performance and minimize false detections, adding complexity to the integration and continued use of the sensor.

Alongside this, capacitive sensors generally have limitations in terms of the maximum weight they can detect, and the accuracy as weight measurement scales change. Importantly, the cost of capacitive weight detection sensors is higher compared to other detection methods, potentially impacting the overall cost-effectiveness of the toolbox system. Careful evaluation of these factors is essential when selecting the weight detection sensor to be used for Wrench Monkey.

Section 3.4.3: Photoelectric Detection

Implementing photoelectric-based tool detection systems, such as IR-based proximity sensors, for detecting tools in a toolbox offers various advantages and considerations. One significant advantage is the non-contact nature of photoelectric sensors, which, like capacitive, eliminates the need for physical contact with the tools. This approach reduces the risk of damage or wear to both the tools and the sensors, ensuring their longevity and minimizing maintenance requirements.

Furthermore, photoelectric sensors provide reliable and consistent detection of tools within the toolbox, regardless of factors such as tool material, size, or orientation. This versatility makes them suitable for a wide range of tool types and configurations, enhancing the flexibility and adaptability of the toolbox detection system.

Alongside this, photoelectric sensors offer fast response times and high accuracy, enabling rapid detection of tool presence within the toolbox. This ensures efficient organization and inventory management, allowing the system to quickly detect tools as needed.

Additionally, photoelectric sensors can be easily integrated into the toolbox design, offering flexibility in terms of placement and configuration. Examples of photoelectric sensors that can be used for tool detection include infrared (IR) proximity sensors which emit infrared light and detect the reflection or absence of this light to determine the presence or absence of a tool within the detection zone. Another example is a laser distance sensor. These sensors use laser beams to measure the distance to an object, enabling precise detection of tool presence within the toolbox. Lastly there are optical sensors, which use visible light to detect the presence or absence of tools, providing reliable detection. These sensors usually come equipped with an independent light source to operate in various lighting conditions.

However, despite their advantages, photoelectric-based tool detection systems have limitations that need to be considered. For example, these sensors are susceptible to environmental factors such as ambient lighting conditions or debris such as dirt and dust (common in industrial workplaces), which can affect their accuracy and reliability. Additionally, calibration may be required to optimize

sensor performance and minimize false detections, adding complexity to the setup and maintenance process.

Furthermore, the cost of photoelectric sensors may vary depending on factors such as sensor type, brand, and features, which may impact the overall cost-effectiveness of the toolbox detection system. Careful evaluation of these factors is essential when determining which sensor to use.

Section 3.4.4: RFID Detection

Implementing a RFID tag-based detection system, where RFID stickers are placed on tools, offers several advantages. One significant advantage is the cost-effectiveness of RFID tags, which are relatively cheap and readily available in various sizes and configurations, and are compatible with different materials, such as metal which is commonly used for tool construction. This affordability makes RFID tag-based detection systems a practical solution for tool management applications, allowing for widespread adoption and deployment.

Importantly, RFID tag-based detection systems offer the capability to not only detect the presence of a tool but also identify specific tools based on their unique RFID tags. This enables accurate inventory tracking and management, ensuring that each tool is accounted for and located within the toolbox. Additionally, RFID tags can store additional information such as tool specifications or maintenance history, enhancing the overall toolbox management system.

Furthermore, RFID tag-based detection systems provide a non-contact method of tool detection, eliminating the need for physical contact with the tools. This approach reduces the risk of damage or wear to both the tools and the detection system, ensuring their longevity and minimizing maintenance requirements.

However, despite these advantages, RFID tag-based detection systems may have important limitations and drawbacks to consider. Notably, the requirement for individual RFID readers for each tool slot or compartment within the toolbox. This drives up complexity and cost, particularly in applications where a large number of tools are used, as each RFID reader must be integrated and managed separately.

Moreover, RFID tag-based detection systems may be susceptible to interference from metallic objects or other sources of electromagnetic interference, which can affect their accuracy and reliability. Additionally, the range of RFID readers is limited, requiring careful placement of either the sensor or the tool to ensure reliable detection of tools within the toolbox. All of these factors must be balanced to determine if RFID is suitable for the Wrench Monkey system.

Section 3.4.5: Tool Detection Sensor Comparison and Selection

In the design considerations for tool detection within the Wrench Monkey toolbox, resistive strain gauges were decided as the optimal choice, primarily due to their low cost and ease of implementation. Unlike the alternate sensing technologies discussed, namely capacitive and photoelectric sensors, resistive strain gauges offer a straightforward solution that only requires the measurement of resistance change, a capability readily supported by most microcontroller chips. This simplicity in how the sensor works significantly simplifies the integration process, eliminating the need for complex additional circuitry and reducing overall implementation costs.

Furthermore, the fundamental principle of how resistive strain gauges work means they are available in various form factors on the market. This widespread availability of different shapes and sizes significantly simplifies the selection process, allowing for the identification of a suitable strain gauge configuration that can be used within the Wrench Monkey toolbox. By forming a perimeter around each tool, the strain gauges are then capable of detecting tool presence within the toolbox, as the gauge is expanded when the tool is present, changing its measured resistance value.

Although resistive strain gauges inherently have lower accuracy compared to the other sensing technologies such as photoelectric or capacitive sensors, the binary nature of our project is adequately met by the strain gauge. The ability to detect the presence or absence of a tool suffices for the intended purpose.

However, recognizing the potential limitations of resistive strain gauges in distinguishing between similar tools, a small-scale implementation of RFID tool detection will complement the primary sensing mechanism for a select few tools. This addition allows the toolbox to not only detect the presence of a tool but also verify its type within a tool slot, mitigating the risk of accidental tool switching. By combining the simplicity and affordability of resistive strain gauges with the precision of RFID technology, the Wrench Monkey toolbox achieves a comprehensive and efficient tool detection system tailored to its engineering specifications. The table below outlines the main qualitative factors used to compare each sensing technology.

Sensor Type	Cost	Complexity	Accuracy
Strain Gauge	Low	Low	Low
Capacitive	Medium	Low	Medium
Photoelectric	Medium	Medium	High
RFID	High	High	High

Table 5: Tool Detection Sensors Comparison

Section 3.5: Batteries

Section 3.5.1: Lithium Ion Battery

Utilizing lithium-ion batteries for the project has many distinct advantages over other battery technologies. One significant advantage of lithium-ion batteries is their high energy density, allowing for compact and lightweight designs while providing sufficient energy storage for the device's use. This high energy density makes lithium-ion batteries well-suited for applications where space and weight constraints are important considerations, as is the case with Wrench Monkey.

Importantly, lithium-ion batteries are available in various chemistries, like lithium iron phosphate (LiFePO₄) batteries, which offer advantages such as improved safety and longer lifespan compared to other lithium-ion battery chemistries. This versatility means that different chemistries can be chosen depending on the use case. For example, LiFePO₄ batteries are known for their enhanced thermal stability and reduced risk of thermal runaway, making them a preferred choice for applications where safety is a primary concern, such as this project, which is designed for industrial applications.

However, despite their advantages, lithium-ion batteries also present certain considerations when implementing them. One notable concern is the need for active battery management systems (BMS) to prevent overcharging, over discharging, and thermal runaway, which can lead to dangerous situations such as explosion or fire. These BMS systems add complexity and cost to systems powered by lithium-ion batteries, which require careful monitoring and control of battery parameters to ensure safe and reliable operation.

Alongside this, lithium-ion batteries are susceptible to performance degradation over time, particularly in environments with high temperature or humidity. Factors such as cycling, depth of discharge, and ambient conditions can affect the lifespan and performance of lithium-ion batteries, necessitating proper maintenance and monitoring to optimize their longevity and efficiency.

Also of note, is that lithium ion batteries are generally more expensive than other rechargeable battery types. Their complex construction makes them a less economical choice compared to other battery chemistries available on the market.

With all these factors in mind, it can be seen that lithium-ion batteries offer advantages such as high energy density, low self-discharge rates, and availability in various chemistries such as lithium iron phosphate (LiFePO₄). However, they also require external circuitry control systems to mitigate safety risks and can

experience performance degradation over time. Consideration of these factors will determine what battery is most suitable for the Wrench Monkey.

Section 3.5.2: Sealed Lead Acid (SLA) Battery

Sealed lead-acid (SLA) batteries offer a few advantages and disadvantages depending on the application. One significant advantage is their low cost relative to other battery types, making them a simple solution for economical power storage. Additionally, SLA batteries feature a simple charging process, typically only requiring a constant voltage charger, which simplifies maintenance and operation. This ease of charging makes SLA batteries practical for an industrial use case, such as what Wrench Monkey is designed for. The capability to supply high power in short bursts, along with having high continuous current output, means they are suitable for demanding applications.

However, one notable drawback of SLA batteries is their relatively high weight and low energy density compared to other battery technologies like lithium-ion. The lead-acid chemistry used in SLA batteries results in a heavier and bulkier battery design, limiting their suitability for applications where weight and space constraints are important considerations, as is the case with our project. The low energy density of SLA batteries also means they provide less energy storage capacity overall, which has a net decrease on overall efficiency of the system.

Furthermore, SLA batteries are susceptible to performance degradation over time, particularly if subjected to high heat, deep discharges, or improper charging practices. This can result in reduced battery lifespan and premature wear, requiring regular maintenance and or complete replacement to ensure optimal performance.

Another consideration is the potential for electrolyte leakage in SLA batteries, which can occur if the battery is damaged or overcharged. This can pose safety hazards and environmental concerns, necessitating proper handling and disposal procedures to mitigate potential problems.

Despite these drawbacks, SLA batteries remain a popular choice for various applications. Their low cost, simple charging, and reliability make them a practical solution for various power storage needs, particularly in situations where weight and space constraints are not critical factors.

Section 3.5.3: Nickel-Cadmium Battery

Nickel-cadmium (NiCd) batteries offer several characteristics that can be advantageous depending on the use application. One significant advantage is their ability to withstand frequent charging and discharging cycles, making them highly durable and reliable. NiCd batteries are known for their robust construction and resistance to overcharging and deep discharging, which contributes to their long lifespan and consistent performance over time.

Moreover, NiCd batteries feature a fast charging capability, allowing them to be rapidly recharged compared to other battery types. This fast charging ability makes NiCd batteries well-suited for applications where quick turnaround times are essential, such as industrial robotic systems like the Wrench Monkey.

Additionally, NiCd batteries exhibit stable performance over a wide range of temperatures, making them suitable for use in extreme environmental conditions. This thermal stability enhances the versatility and reliability of NiCd batteries, allowing them to operate effectively in diverse applications and environments.

However, one notable drawback of NiCd batteries is their susceptibility to the memory effect, which can occur if the batteries are not fully discharged before recharging. The memory effect causes the battery to "remember" its previous state of charge, leading to reduced capacity and performance over time. To mitigate the memory effect, NiCd batteries require periodic deep discharges to maintain optimal performance, which can be inconvenient and time-consuming.

Furthermore, NiCd batteries have a lower energy density compared to other battery chemistries, resulting in a relatively bulky and heavy design. This limits their suitability for applications where weight and space constraints are important considerations. NiCd batteries also contain a toxic element, cadmium, which poses environmental and health hazards if not properly disposed of or recycled. The presence of cadmium in NiCd batteries requires careful handling and disposal procedures to minimize environmental impact and ensure compliance with regulations. Careful consideration of these factors is essential when selecting NiCd batteries for use.

Section 3.5.4: Battery Comparison and Selection

In regards to the selection of a power source for the Wrench Monkey project, a lithium-ion battery became the definitive choice, primarily due to a combination of lightweight design and high energy density. Given the project's emphasis on low weight, the lightweight nature of lithium-ion batteries stands out compared to the other discussed battery chemistries. This characteristic not only contributes to the overall maneuverability of the Wrench Monkey but also aligns seamlessly with the project's objectives of optimizing efficiency and operation, which are heavily affected by the weight of the project.

Most importantly, the high energy density of lithium-ion batteries further pretty much solidified their position as the chosen power source for the Wrench Monkey. This characteristic ensures extended operation, allowing the Wrench Monkey to function for prolonged durations without the need for recharging. Such reliability and endurance are very important considerations, particularly in

industrial environments where sustained performance is essential for meeting operational demands effectively.

Despite the comparatively higher costs associated with lithium-ion batteries when compared to the alternative sealed lead-acid (SLA) or nickel-cadmium (NiCad) batteries, the emphasis on weight reduction outweighed other factors in the selection process. While SLA and NiCad batteries offer lower initial costs, their bulkier design and lower energy density compromise the overall performance of the Wrench Monkey. In this context, the higher cost from lithium-ion batteries is justified, as its lightweight construction and superior energy density directly contribute to the project's operational goals.

Furthermore, the decision to opt for lithium-ion batteries over NiCad batteries is due to considerations about charging requirements. While lithium ion batteries require more complicated BMS circuitry to safely charge and discharge, NiCad batteries are plagued by the “memory effect” where incomplete discharges result in decreased battery capacity over time. Such limitations are unacceptable in an industrial environment, for which the Wrench Monkey is designed.

Although the integration of lithium-ion batteries necessitates more complex circuitry to manage charging and discharging processes, the benefits they offer in terms of weight reduction and energy efficiency far outweigh these additional requirements. Ultimately, the selection of lithium-ion batteries is based on maximizing the performance, efficiency, and longevity of the Wrench Monkey. The table below shows some of the comparisons made to determine the viability of each battery type for the project.

Battery Type	Cost	Weight	Energy Density	BMS Required
Lithium-Ion	High	Low	High	Yes
Sealed Lead-Acid	Low	High	Low	No
Nickel-Cadmium	Low	Medium	Medium	No

Table 6: Battery Comparison

Section 3.6: Line Detection Sensors

Section 3.6.1: Color Sensor

Color sensors being used for the line following system of the Wrench Monkey project offer several advantages that must be considered. One significant advantage is their versatility in detecting multiple colors accurately, which facilitates the complex navigation strategy we are planning on implementing between workstations. This capability allows the Wrench Monkey to differentiate between the various paths that will be present in the planned work area.

Notably, color sensors are typically available at a relatively low cost, making them an economical solution for line following applications. This affordability contributes to the overall cost efficiency of the Wrench Monkey project, allowing for the integration of multiple sensors within the given budget constraints.

Additionally, color sensors provide high precision and accuracy across the visible light spectrum, ensuring stable and reliable control of the robot's movement. This precision, coupled with a suitable control scheme, enables the Wrench Monkey to maintain optimal alignment with the desired path, minimizing deviations and errors during navigation.

However, color sensors also have a few important drawbacks. One notable drawback is their dependency on external lighting conditions for accurate color detection. Ambient light or additional light sources may be required to ensure adequate illumination for the sensors to function effectively, particularly in environments with varying lighting conditions or low light levels. This reliance on external lighting can pose challenges in industrial environments where lighting conditions may fluctuate unpredictably.

Furthermore, for stable control and reliable line following, at least two color sensors are typically necessary to detect both edges of the line. This increases the complexity and cost of the system, as multiple sensors must be integrated to ensure proper operation of the system.

Moreover, color sensors may be susceptible to interference from too bright ambient light, which can affect their accuracy and reliability. Additionally, calibration and fine-tuning may be required to optimize sensor performance and minimize false detections, adding complexity to the setup and maintenance process.

So, while color sensors offer advantages such as multi-color detection, low cost, precision, and accuracy, they also come with considerations such as dependency on external lighting, the need for multiple sensors, and susceptibility to interference.

Section 3.6.2: Camera Sensor

Utilizing a camera for line following in the Wrench Monkey is another possibility. One significant advantage is the higher fidelity provided by a camera, allowing for more detailed and accurate detection of the line. Unlike color sensors, a camera can capture the entire field of view, enabling it to determine not only the presence of the line but also its angle and curvature. This enhanced sensing capability facilitates smoother control of the Wrench Monkey, enabling it to navigate curves and intersections with greater precision and agility. In addition to better navigation of different path geometries, there are also more opportunities to implement sophisticated tools such as image processing and computer vision. With the help of these two tools we would be able to more easily identify different

colored paths and the center of the path for error signal calculation which would be used for the control system.

Additionally, cameras are becoming increasingly affordable and accessible, with a wide range of options available to suit various budgets and requirements. This accessibility makes it possible to integrate a camera-based line following system into the Wrench Monkey project without significantly exceeding budget constraints.

In terms of size cameras are generally larger than IR and color sensors. Despite their size, cameras would still be advantageous over the other sensors because only one camera would be required to accomplish the visual control task, whereas at least two IR/color sensors would need to be used.

However, using a camera for line following also presents certain drawbacks. One notable drawback is the higher cost compared to traditional color or IR sensors. Importantly, cameras typically require more advanced hardware and software components such as a microcontroller or single-board computer, to process and analyze the camera feed in real-time. This increased computational complexity adds to the overall system complexity and may require additional resources for development and integration, resulting in a higher overall system cost.

Moreover, cameras may be susceptible to environmental factors such as lighting conditions, glare, and shadows, which can affect their performance and reliability. Proper calibration and tuning may be necessary to optimize camera performance and ensure accurate line detection under varying conditions.

Section 3.6.3: IR Sensor

Utilizing simple IR reflector sensors for line following in the Wrench Monkey project is another possible choice. One significant advantage is the simplicity of the sensor design, consisting of only an IR emitter LED and an IR receiver. This simplicity makes interfacing with the sensor very straightforward, as it typically has only two possible outputs - on or off - simplifying integration into the Wrench Monkey's control system.

Moreover, IR reflector sensors are available at a very low cost, making them a cost-effective solution for line detection applications. Their affordability allows for the integration of multiple sensors, as two would be required to properly function. This provides redundancy and reliability in line following tasks. IR reflective sensors also offer fast response times, enabling rapid detection of changes in surface reflectivity. This responsiveness facilitates real-time adjustments to the Wrench Monkey's trajectory using a given control scheme

However, using IR reflector sensors for line following also presents certain drawbacks. One notable limitation is their reliance on surface reflectivity to detect the line. IR reflector sensors can only detect dark surfaces that absorb IR light,

such as black lines on a white background. This limitation restricts their applicability in environments with light-colored or reflective surfaces, where contrast between the line and the background may be insufficient for reliable detection.

Furthermore, IR reflector sensors may be susceptible to interference from ambient IR radiation sources, such as sunlight or artificial lighting. This interference can affect sensor performance and reliability, leading to false detections or erratic behavior.

Importantly, the range of IR reflector sensors is limited, which requires careful placement and alignment to ensure optimal detection of the line. Additionally, environmental factors such as dust can impact sensor performance and require periodic inspection maintenance to ensure consistent operation in an industrial application.

With this in mind, while IR reflector sensors offer advantages such as simplicity, low cost, and fast response times, they also come with considerations such as limited detection range, susceptibility to interference, and reliance on surface reflectivity for line detection. These factors are very important to balance when considering IR reflector sensors for line following in the Wrench Monkey project.

Section 3.6.4: Line Detector Sensor Comparison and Selection

In the selection process for the line detection sensor of the Wrench Monkey, the decision to integrate a camera system was mainly decided by its fidelity and precision over the other considerations. While other options such as infrared (IR) or color sensors were considered, the fidelity offered by a camera surpasses these alternatives by thousands or even millions of times. This superior resolution enables the Wrench Monkey control system to achieve much more precise control, which is crucial for navigating the paths it will be set on..

Despite the higher initial cost associated with cameras compared to the more primitive IR or color sensors, they unlock many more capabilities necessary to achieve the Wrench Monkey's operational requirements. The enhanced fidelity offered by cameras justify the additional expense, as they allow more complex and efficient control systems to navigate the pathways and traverse around variations like curves with higher accuracy and smoother movement.

However, it's important to point out that the integration of a camera-based line detection system requires more advanced computing hardware to process and interpret the captured images. This additional requirement increases the overall cost of the system compared to other designs where IR or color sensors are used. Nonetheless, the benefits achieved from the higher resolution of the camera system justify the additional expenses associated, as they enhance the Wrench Monkey's capabilities and performance.

Moreover, the optics-based nature of all discussed sensor options, including cameras, requires careful consideration of environmental factors such as ambient light and debris. To mitigate potential issues arising from varying lighting conditions, an attached lighting source will be implemented to ensure consistent performance of the camera system independent of these external factors.

Knowing all of this, while the decision to integrate a camera-based line detection sensor introduces additional costs and complexity, the higher fidelity and precision it offers are much more important for the Wrench Monkey's operation. By leveraging the more advanced imaging technology afforded by cameras, the control system gains the capability to navigate with higher accuracy and smoothness. With careful consideration of associated challenges such as computing requirements and environmental factors, the camera-based line detection sensor emerges as a suitable and more preferable choice. The table below outlines some of the characteristics of each sensor type that were compared to make a decision.

Line Detection Sensor	Fidelity	Cost	Computing Resources Required
Color	Low	Low	Low
Camera	High	High	High
IR	Low	Low	Low

Table 7: Line Detection Sensor Comparison

Section 3.7: Chassis Base Material

Section 3.7.1: Wood

Wood being used as the chassis base construction material for the Wrench Monkey project is a very strong consideration. One significant advantage is its high strength-to-weight ratio, allowing for a sturdy and durable chassis while keeping overall weight relatively low. This lightweight design enhances the maneuverability and energy efficiency of the Wrench Monkey, prolonged operation on a single charge.

Moreover, wood is readily available and cost-effective compared to alternative materials such as metal, plastic, or composite materials like carbon fiber. Its affordability makes it an attractive option for prototype development or lower-budget projects like the Wrench Monkey, minimizing prototyping and production costs without compromising structural integrity. Since wood is relatively easy to work with and manipulate, this allows for customization and modification to suit specific design requirements. This flexibility in fabrication enables rapid prototyping and iterative design improvements, accelerating the development process.

However, using wood as the chassis base construction material also presents certain drawbacks. One notable limitation is its flammability, which poses a safety risk, especially in industrial environments where fire hazards must be mitigated. Proper fire-resistant coatings or treatments may be necessary to minimize the risk of ignition and ensure compliance with safety regulations.

Furthermore, wood is susceptible to environmental factors such as moisture, humidity, and temperature fluctuations, which can lead to warping, swelling, or decay over time. These issues may compromise the structural integrity and longevity of the chassis, potentially requiring replacement or other protective measures to prevent deterioration.

Similarly, compared to metals or composites, wood may have lower impact resistance and durability, particularly in high-stress or heavy-duty applications. This may limit the suitability of wood for tasks that require extreme load-bearing capacity or resistance to mechanical wear and tear. While wood offers advantages such as high strength-to-weight ratio, affordability, and ease of fabrication, it also comes with considerations such as flammability, susceptibility to environmental factors, and potential limitations in durability and impact resistance. Careful evaluation of these factors is essential if wood is selected as the chassis base construction material for the Wrench Monkey project.

Section 3.7.2: Aluminum

Aluminum metal being used for the chassis base construction of the Wrench Monkey project offers several advantages and drawbacks. One significant advantage is its combination of high strength, low weight, rigidity, and durability. Aluminum's excellent strength-to-weight ratio allows for a sturdy yet lightweight chassis, enhancing the maneuverability and energy efficiency of the Wrench Monkey. Its inherent rigidity ensures structural integrity, providing stability and reliability during operation. Additionally, aluminum exhibits exceptional durability, capable of withstanding mechanical stresses and impacts expected to be encountered within industrial environments.

Notably, aluminum is highly resistant to oxidation when exposed to humidity and temperature variations, making it suitable for use in diverse environmental conditions. This corrosion resistance ensures long-term performance and longevity of the chassis, minimizing maintenance requirements and prolonging service life. Additionally, aluminum offers excellent thermal conductivity, facilitating efficient heat dissipation during operation. This thermal management capability helps prevent overheating of internal components, ensuring optimal performance and reliability under sustained operation.

However, using aluminum metal for the chassis base construction also presents certain drawbacks. One notable limitation is its higher price compared to alternative materials such as plastic or wood. The cost of aluminum and the

machining hardware required for fabrication increases the overall production expenses, which might be unsuitable for a given budget constraint

Furthermore, machining aluminum requires specialized equipment and expertise, adding complexity and time to the fabrication process. The need for precision machining and finishing results in less time to dedicate to other parts of the project, along with higher production costs compared to materials that are easier to work with, such as wood or plastic. With these in mind, while aluminum offers advantages such as high strength, low weight, corrosion resistance, and thermal conductivity, it also comes with considerations such as higher cost, machining complexity, and lower impact resistance.

Section 3.7.3: Plastic

Utilizing a plastic chassis base for the Wrench Monkey project offers several advantages and drawbacks. One significant advantage is its high strength and rigidity, which allows for a sturdy and stable chassis construction. Plastic materials such as ABS or polycarbonate can provide sufficient structural support for the Wrench Monkey, ensuring reliable operation in various environments.

Importantly, plastic chassis bases offer excellent impact resistance, capable of absorbing and dispersing energy from collisions or mechanical shocks without lasting deformation. This impact resistance helps protect internal components and ensures the durability of the Wrench Monkey, reducing the risk of damage during operation.

Additionally, plastic chassis bases are lightweight compared to metal alternatives, contributing to the overall agility and maneuverability of the Wrench Monkey. The lightweight nature of plastic materials makes them suitable for applications where weight constraints are of concern, such as this project.

However, using a plastic chassis base poses a few cons to consider. One notable limitation is its lower strength-to-weight ratio compared to materials like aluminum or wood. Plastic materials may require thicker walls or additional reinforcement to achieve the same level of structural integrity as metal or composite alternatives, potentially adding bulk and weight to the chassis.

Furthermore, plastic chassis bases may be susceptible to deformation under high loads or when exposed to elevated temperatures. Prolonged exposure to heat or mechanical stress can cause plastics to soften or warp, compromising the stability and functionality of the Wrench Monkey. Moreover, plastic materials may have limited resistance to certain chemicals or environmental factors, which can lead to degradation or discoloration over time. This may necessitate protective coatings or treatments to maintain the appearance and performance of the chassis base. Careful evaluation of these factors is essential if selecting a plastic chassis base for the Wrench Monkey project.

Section 3.7.4: Carbon Fiber

Carbon fiber being used for the chassis base of the Wrench Monkey project offers several advantages. One significant advantage is its exceptionally high strength-to-weight ratio, making it one of the strongest and lightest materials available for chassis construction. Carbon fiber's unparalleled strength allows for a robust and durable chassis while keeping overall weight to a minimum, enhancing the agility and energy efficiency of the Wrench Monkey.

Moreover, carbon fiber exhibits outstanding durability and stability in industrial environments, as it is resistant to heat, humidity, and corrosion. This resilience ensures long-term performance and reliability of the chassis, even in harsh operating conditions, like industrial environments, minimizing maintenance requirements and downtime. Additionally, carbon fiber offers excellent stiffness and rigidity, providing high structural support for the Wrench Monkey's components, namely the battery and tool chest. Its inherent stiffness helps maintain stability during operation, ensuring smooth movement along designated paths.

Furthermore, carbon fiber can be molded into complex shapes and configurations, allowing for customizable designs to meet specific project requirements. This flexibility in fabrication enables the creation of lightweight yet robust chassis structures tailored to the Wrench Monkey's unique needs.

However, using carbon fiber for the chassis base also presents certain drawbacks. One notable limitation is its very high cost compared to traditional materials such as metal or plastic. The expense associated with carbon fiber production and processing may significantly impact project budget constraints, making it less feasible for a budget-conscious project like the Wrench Monkey.

Importantly, carbon fiber can be challenging to machine and work with due to its hardness and abrasiveness. Specialized equipment and expertise are required for cutting, shaping, and finishing carbon fiber components, adding complexity and cost to the fabrication process. So, while carbon fiber offers advantages such as high strength-to-weight ratio, durability, and stability, it also comes with considerations such as high cost, difficulty in machining, and limited availability. Careful evaluation of these factors is essential when considering carbon fiber for the chassis base of the Wrench Monkey project.

Section 3.7.5: Chassis Base Material Comparison and Selection

While considering the pros and cons for each chassis material for the Wrench Monkey project, wood emerged as the optimal choice, driven by its affordability and ease of manipulation. While the alternatives such as plastic, aluminum, and carbon fiber were considered, the inherent advantages of wood outweighed the competing materials. Notably, wood's remarkably low price and accessibility made it a superior option given the project's budgetary constraints.

One of the key factors influencing the decision was wood's ease of manipulability with basic hand and power tools. Unlike the more rigid and specialized nature of aluminum or carbon fiber, wood is much easier to form to a desired shape. Sanding, cutting, and drilling, can be done very easily compared to the other materials. This attribute simplifies fabrication and allows prototypes to be iterated on quickly

Despite not being the strongest or most durable material among those considered, wood offers sufficient strength for the intended application in the project. The structural integrity provided by wood is more than adequate to support the operational requirements of the Wrench Monkey, ensuring reliability while operating. Additionally, the versatility of wood allows for additional reinforcement or customization to be added easily as needed, enhancing its suitability for design specifications that can change.

Another significant advantage of wood is its widespread availability and ease of acquisition. Unlike aluminum or carbon fiber, which may require specialized suppliers or manufacturing processes, wood is readily accessible and can easily be sourced locally. Additionally, wood can be easily cut to fit at a supplier, reducing the need for expensive machining or fabrication processes and therefore expedites the prototyping and construction timeline.

In summary, the selection of wood as the chassis material for the Wrench Monkey was based on balancing cost-effectiveness, ease of fabrication, and structural suitability. While it may not boast the same strength-to-weight ratio as aluminum or the high-tech appeal of carbon fiber, wood's affordability, manipulability, and accessibility make it an ideal choice for realizing the project's objectives. The table below outlines the factors that were considered when choosing the material to use.

Chassis Base Material	Cost	Strength	Ease of Manipulability
Wood	Low	Medium	High
Aluminum	High	High	Low (Machinery Required)
Plastic	Medium	Medium	Medium
Carbon Fiber	Very High	High	Low (Machinery Required)

Table 8: Chassis Base Material Comparison

Section 3.8: Part Selection

The engineering specifications and constraints emerged were the primary factors in the process of selecting part technologies for the Wrench Monkey, with size, weight, and power requirements having the most significant influence. The compact footprint of the chassis, measuring just 1 foot by 2 feet, served as the primary constraint that heavily shaped the selection of parts throughout the project. Every component chosen has to adhere to differing size limitations to ensure integration within the confined space of the Wrench Monkey chassis.

As such, the sizing of each part was a primary factor in determining the suitability of various parts for the project. Components had to be compact enough to fit within the constrained dimensions of the chassis without compromising functionality or performance. This required evaluation of each part's physical footprint and form factor to ensure efficient utilization of space and optimal layout within the Wrench Monkey's design.

Moreover, the implemented weight constraints posed another significant challenge that directly influenced part technology selection. Additional parts or heavier parts being added to the Wrench Monkey had potential repercussions on its agility, maneuverability, and energy efficiency. As such, lightweight part technologies were prioritized for the chassis to maximize operational performance. Motors, batteries, and sensors were each researched for their respective weight contribution, with preference given to solutions that offered a favorable balance of performance and weight efficiency.

Additionally, the power requirements played an important role in determining the viability of part technologies for the Wrench Monkey. With power being limited by the on-board battery, every component had to be selected with careful consideration of its power consumption and efficiency. Energy-efficient designs and lower-power versions were prioritized to ensure optimal utilization of available power capacity, which in turn extends the operational runtime.

Section 3.8.1: Chassis Material

In our team's research for the most suitable material for our chassis, a comprehensive comparison between plywood and oriented strand board (OSB) was made, and attributes of each material type were considered. After our research, it became apparent that birch plywood could easily meet our project's specific requirements, primarily due to its combination of strength, versatility, and low cost.

One of the primary factors in favor of plywood is its structural integrity, stemming from its composition of adhered sheets of wood. This layered construction gives plywood exceptional durability and resilience, making it capable of withstanding significant loads and stresses without deformation or total failure. In contrast, OSB, constructed from adhered strips of scrap wood, lacks the cohesive strength

and stability compared to plywood, rendering it inherently less robust and more prone to structural failure.

Moreover, the easier machinability of plywood proved to be a critical consideration in our material selection process. Unlike OSB, which presents significant challenges during fabrication due to its fragile nature, plywood lends itself to machining without breaking. Drilling, cutting, and sanding are common modifications expected to be performed while prototyping and assembling Wrench Monkey, and OSB is more likely to break when these tasks are performed. This inherent workability of plywood not only makes our production process easier but also minimizes the risk of errors like cracking/breaking, which would require purchasing of new wood.

The denser composition of plywood compared to OSB further makes it the preferred chassis material, giving it higher rigidity and stability. This structural integrity not only reinforces the overall strength of our design but also provides a solid foundation for supporting the additional components like the battery and tools themselves. As a result, the inherent stiffness of plywood further mitigates the risk of mechanical failure or structural compromise.

Additionally, plywood's high resistance to warping, moisture ingress, and environmental degradation improves its suitability for our application, which is intended for use in industrial environments where humidity and temperature fluctuate. Unlike OSB, which may succumb to warping or degrade when exposed to moisture or fluctuating environmental conditions, plywood maintains its shape and structural integrity over time, ensuring the longevity and reliability of the chassis in diverse operating environments.

Beyond these advantages, plywood offers a slew of other benefits, including a smoother surface finish for enhanced aesthetics and ease of handling and transportation due to more rigid structure. By selecting birch plywood as our chassis material, the Wrench Monkey's chassis strength, durability, and reliability increases. The table below gives a few of the factors compared between the two wood types.

Chassis Base Material	Cost	Strength	Ease of Manipulability
Plywood	\$9	High	High
Oriented Strand Board	\$5	Medium	Low (Prone to Breakage)

Table 9: Wood Selection

Section 3.8.2: Battery Type

In our search for battery options for our project, we boiled down the comparison between a 12V 5Ah battery and a 12V 7Ah battery. We researched the offerings

from 2 different brands: the 5Ah battery from NERMAK priced at \$29 and the 7Ah battery from HWE Energy priced at \$28. Both batteries utilize the same LiFePO4 chemistry, ensuring comparable performance and reliability for our project.

One of the primary factors weighed in our decision is the capacity of each battery. While the NERMAK 5Ah battery obviously has a lower capacity compared to the HWE Energy 7Ah battery. This higher capacity of the 7Ah battery presented an advantage as well as being cheaper, allowing us to achieve our desired operational runtime for a lower price.

Despite the larger footprint and slightly heavier weight of the 7Ah battery, measuring at 5.94 x 2.56 x 3.7in and weighing 2.1 lbs compared to the 1.6 lbs and dimensions of 3.54 x 2.67 x 3.93in for the 5Ah battery, the cost-effectiveness and increased capacity of the former made it the more viable option for our project. The larger capacity helps ensure extended operation between charges. Furthermore, the lower price point of the 7Ah battery from HWE Energy makes it a more desirable choice without compromising on quality or performance. This emphasis on affordability aligns with our project's budgetary constraints and economically-conscious design efforts.

The physical characteristics of the batteries, such as size and weight played the most significant role in our decision-making process. While the 7Ah battery may have a larger footprint and weigh slightly more than the 5Ah counterpart, these differences are outweighed by the benefits it offers in terms of capacity and cost-effectiveness. The slight increase in size and weight is a reasonable trade-off for the extended runtime and overall performance gains achieved with the 7Ah battery.

Additionally, the cost analysis is a very important aspect of our decision-making process. Because of the marginal price difference between the two batteries, the lower cost of the 7Ah battery from HWE Energy makes it a better choice. This cost-saving opportunity allows us to invest in other areas of the project to further enhance its capabilities.

In essence, the decision to opt for the 12V 7Ah battery from HWE Energy over the 12V 5Ah battery from NERMAK was driven by a careful consideration of factors such as power capacity, cost, size, and overall suitability for our project's requirements. By leveraging the higher capacity and cost-effectiveness of the 7Ah battery, we are able to achieve optimal performance and longevity to allow the Wrench Monkey project to realize its full potential. The table below shows the main comparison points considered when choosing the battery to be used.

Battery Choice	Cost	Capacity	Footprint	Weight
NERMAK	\$29	5Ah	5.94 x 2.56 in.	2.1 lbs
HWE Energy	\$28	7Ah	3.54 x 2.67 in.	1.6 lbs

Table 10: Battery Selection

Section 3.8.3: Motor Type

In our team's assessment of motor options for the Wrench Monkey project, the comparison boiled down to determination between the CQRobot Ocean 12V DC motor and the Walfront 12V DC motor for the propulsion system. Both motors offer a rotational speed of 40RPM at the given voltage and are both equipped with encoders, ensuring precise control and feedback in our application. However, upon comprehensive evaluation, several key distinctions emerged that lead to the selection of the CQRobot motor over the Walfront motor.

One of the primary considerations in our decision-making process was the torque capability of each motor. While both motors deliver a similar rotational speed, the CQRobot motor stands out with its superior torque rating of 70kg.cm compared to the Walfront motor's 25 kg.cm. This higher torque capacity is essential for our project's requirements, as scenarios where increased force and power are necessary are expected, and torque is required to accomplish that

Furthermore, the mechanical design and gearbox setup of the motors played a crucial role in our decision. The Walfront motor's gearbox configuration was not ideal for Wrench Monkey, as the rotating shaft is perpendicular to the motor shaft. This posed potential challenges in integration and alignment within our system. In contrast, the CQRobot motor's output shaft is parallel to the motor shaft, and mounting hardware is included. This offers a simpler and more efficient mechanical arrangement, making installation easier and reducing potential points of failure.

Moreover, the availability and quality of documentation for each motor were significant factors in our evaluation process. The CQRobot motor stood out as it has extensive documentation, including detailed specifications, dimensions of various components, and integration guidelines. This information allows a much simpler process to integrate the motor into our project, and allows efficient design and fabrication of mounting hardware, as there is no need to manually measure the dimensions of fixtures and of the motor itself and ensures compatibility with existing hardware.

Ultimately, the decision to opt for the CQRobot Ocean 12V DC motor over the Walfront motor was driven by a combination of factors, namely higher torque

capabilities, superior mechanical design, and comprehensive documentation. By leveraging these advantages, we are confident in the reliability, performance, and versatility of the chosen motor, allowing the Wrench Monkey project to meet its expected objectives. The table below outlines the main characteristics of the motors considered when deciding on which one to use.

Motor Choice	Cost	Torque	Mounting	Documentation
CQRobot	\$33	70kg.cm	Parallel	Yes
Walfront	\$16	25kg.cm	Perpendicular	No

Table 11: Motor Selection

Section 3.8.4: Line Detector Sensor

In our search process for camera options for the line detection aspect of the Wrench Monkey project, we narrowed down our choices to the Aokin ESP32-CAM and the Seeed Studio ESP32 S3 Sense. Each option presented distinct advantages and drawbacks, requiring a thorough evaluation to determine the most suitable solution.

The Aokin ESP32-CAM offers a straightforward camera module with breakout pins for connection to another microcontroller board. This simplicity can be advantageous, especially for projects where a separate microcontroller is already in use or preferred. However, it also means that additional hardware and integration steps are required to incorporate the camera into the overall system.

On the other hand, the Seeed Studio ESP32 S3 Sense integrates an ESP32 chip directly onto the camera module, providing a more self-contained solution. While this integration can be convenient depending on the intended application, it introduces potential drawbacks, such as increased power consumption and complexity. Integrating this module with another microcontroller for the rest of the system functions also adds an additional layer of complexity and could impact overall system performance.

However, one notable advantage of having a dedicated microcontroller for the camera, as seen in the Seeed studio module, is the potential to offload image processing tasks. Image processing can be computationally intensive, requiring significant resources from the microcontroller. By dedicating a separate microcontroller for the camera, resources on the main microcontroller can be freed up for the other system functions, enhancing overall system efficiency and performance.

We ultimately decided on utilizing the Seeed Studio camera, due to the aforementioned offloading of camera processing. Since it is crucial to have fast,

accurate image processing, it makes sense to choose the option where a separate subsystem can perform those operations, leaving the main controller to the rest of the system functions. The table below shows the main points considered when determining which camera to use.

Camera Choice	Cost	Camera Resolution	ESP Chip Included?
Aokin	\$9	2MP	No
Seeed Studio	\$24	2MP	Yes

Table 12: Camera Module Selection

Section 3.8.5: Tool Detection Sensor

In our pursuit of suitable components for the Wrench Monkey project, we conducted research to determine the most fitting resistive strain gauge. Recognizing the necessity for a form factor that could align along the tool slot's perimeter, we opted for a long, rectangular strip configuration.

Similarly, our selection process for the RFID sensor involved comprehensive analysis and evaluation. After identifying the RC522-based 13.56 MHz readers as the most suitable option due to their widespread usage and compatibility with our project objectives, we explored the diverse range of available alternatives. Despite the generic nature of these sensors, which offered a multitude of options, our decision-making was guided by a commitment to balancing functionality, compatibility, and cost-effectiveness.

Ultimately, our procurement strategy prioritized sourcing the most cost-effective components from reputable online vendors, ensuring that each component seamlessly integrated into the Wrench Monkey project while upholding professional standards of quality and performance.

Tool Detection	Cost	Setup Difficulty	Durability
HiLetGo RFID	\$3.33	High	High
Marhynchus Thin Film Strain Gauge	\$6.00	Medium	Medium

Table 13: Tool Detection Selection

Section 3.8.6: Microcontrollers & Single-Board Computers

Microcontrollers and single-board computers play a crucial role in modern robotics and embedded systems. They provide the computational power and

connectivity needed to control devices, process data, and interact with the environment. Each type of device offers unique capabilities and features, making them suitable for different tasks within the project's requirements. In this section, we will explore three popular options: the ESP-32S microcontroller, the Raspberry Pi 4 Model B single-board computer, and the Arduino Uno R4 WiFi microcontroller. We will go over the strengths, limitations, applications in robotics, and how they relate to the Robot Monkey project.

Section 3.8.6.1: ESP-32S

The ESP-32S microcontroller, part of the ESP32 series developed by Espressif Systems, is known for its versatility and capabilities in the realm of embedded systems and electronics related hobby projects. One of the key advantages of this microcontroller is its powerful dual core Xtensa LX6 chipset which operates at a clock speed of up to 240MHZ. This high processing power enables the microcontroller to handle complex tasks with ease, making it suitable for controlling the various functionalities of the Robot Monkey. This microcontroller can handle managing motor movements, processing sensor data, or handling communication protocols such as I2C or UART, contributing to the overall performance of the robot.

The ESP-32S also has 32 GPIO pins allowing for an ample amount of sensors, actuators, and external modules which may be implemented for this project. The pins can be utilized not only for basic interfacing but also for advanced functionalities like detecting environmental parameters using data from ultrasonic sensors for object avoidance. Beyond that, the ESP-32S offers versatile connectivity options including Wi-Fi and Bluetooth. This is extremely useful for this project as the robot must be able to send and receive data from a server via a full stack deployment.

Overall, the ESP-32S microcontroller offers a comprehensive solution that aligns well with the design requirements of the Robot Monkey project. Its combination of processing power, GPIO flexibility, and connectivity options makes it a valuable component for completing all of Robot Monkey's tasks efficiently.

Section 3.8.6.2: Raspberry Pi 4 Model B

The Raspberry Pi 4 Model B, developed by the Raspberry Pi Foundation, stands out as a high performance SBC, or single-board computer, that is well-suited for a wide variety of projects. Unlike the ESP-32S microcontroller, which excels in embedded systems with its specialized features, the Raspberry Pi 4 Model B offers a full-fledged computing platform with expanded capabilities. One of the

key advantages of this single-board computer is its powerful Broadcom quad-core ARM processor, running at up to an amazing 1.5GHz. The processing power enables the computer to handle extremely demanding tasks such as web browsing, data analysis, complex algorithms, and image processing. While these capabilities may be considered excessive for the Robot Monkey's requirements, they showcase the versatility and performance of the Raspberry Pi 4.

In addition to its processing power, the Raspberry Pi 4 supports dual 4K displays via micro HDMI ports and can interface with several Raspberry Pi branded cameras. This is unnecessary for the Robot Monkey project as the device only needs to be interfacing with the full stack deployment, but the added community support and documentation for the camera options would make future line detection operations trouble-free. Another notable feature of this single-board computer is the option for expandable memory. While the board itself does not come with a microSD card unless purchasing a bundle option, it supports microSD card sizes ranging from 8GB to a massive 2TB, providing ample storage for data and applications.

Beyond its hardware capabilities, the Raspberry Pi 4 offers the flexibility to load operating systems on board instead of interfacing via serial commands. The wide range of operating systems include many popular Linux distributions like Ubuntu or Debian as well as a scaled-down version of Windows. This versatility extends to a variety of programming languages and development environments, making it accessible to a diverse range of developers and hobbyists.

In summary, while some features of the Raspberry Pi 4 Model B may exceed the design constraints of the Robot Monkey project, its robust computing platform, advanced capabilities, expandability options, and extensive community support make it a valuable complement to the ESP-32S microcontroller.

Section 3.8.6.3: Arduino Uno R4 WiFi

The Arduino Uno R4 WiFi is an iteration of the popular Arduino Uno series. This device introduces built-in Wi-Fi connectivity utilizing an ESP32-based chip. Unlike the ESP-32S microcontroller and the Raspberry Pi 4 Model B, which offer extensive processing power, the Arduino Uno R4 WiFi focuses on simplicity, ease of use, and real-time control in embedded systems.

Key specifications of this microcontroller include an Arm Cortex-M4 processor operating at 48MHz, providing sufficient computational power for real-time control and basic processing tasks. While its processing capabilities may not match that

of the previous two choices, the Arduino Uno compensates with its simplicity and ease of programming, making it accessible to beginners and experienced users alike. With 20 GPIO pins, this Arduino offers a degree of flexibility when interfacing with sensors, actuators, or other external modules when compared to the other two options.

Additionally, this version of the Arduino Uno introduces on-board peripherals such as a 12-bit DAC, CAN BUS, and variable OP AMP, expanding its capabilities with electronics projects. The extended 24 volt tolerance makes it suitable for integrating with motors, LED strips, and other actuators using a single power source.

In summary, the Arduino Uno R4 WiFi strikes a balance between simplicity, functionality, and connectivity making it an excellent choice for projects requiring real-time control and wireless communication while maintaining compatibility with existing Arduino hardware and software. Its user-friendly design, extended documentation, and affordable price point make it a valuable addition to hobbyists and professionals alike.

Section 3.8.6.4: Microcontroller & Single-Board Computer Comparison and Selection

After carefully examining the strengths, limitations, and applications of the ESP-32S microcontroller, Raspberry Pi 4 Model B single-board computer, and the Arduino Uno R4 WiFi microcontroller, the choice for the Robot Monkey project becomes clear with the ESP-32S microcontroller standing out as the most suitable option.

The ESP-32S's versatile connectivity options including Wi-Fi and Bluetooth align perfectly with the project's requirement to send and receive data from a server via a full stack deployment. This connectivity combined with its energy efficiency and powerful dual-core Xtensa LX6 chipset operating at 240MHz, makes it an ideal choice for robotics and the Robot Monkey project.

While the Raspberry Pi 4 Model B and the Arduino Uno R4 WiFi offer impressive features and capabilities such as expandable memory, additional peripherals, and a robust computing platform, they exceed the specific design constraints and requirements and sit at a much higher price point. The extended features of these two devices, while valuable in other contexts, may not be fully utilized or necessary for this particular project's objectives. The ESP-32S emerges as the

optimal choice striking a balance between performance, flexibility, energy efficiency, and cost-effectiveness.

Microcontroller/ Single-Board Comp.	ESP-32S	Raspberry Pi 4 Model B	Arduino Uno R4 WiFi
Chipset	Dual-Core Xtensa LX6	Quad Core Cortex-A72	Arm Cortex-M4
Clock Speed	Up to 240MHz	1.8GHz	48MHz
GPIO Pins	32	40	20
Memory	4MB Flash, 520KB SRAM, 448KB ROM	8GB SDRAM	256KB Flash, 32KB SRAM, 8KB EEPROM
Low Power Mode	Low-Power Coprocessor	Low-Power Coprocessor	N/A
Serial Communication	I2C, I2S, SPI, UART	UART, SPI, I2C	UART, I2C, SPI, CAN
OS Support	FreeRTOS	Raspbian/Linux	Arduino Cloud
Connectivity	Wi-Fi, Bluetooth Classic, BLE	Wi-Fi Dual Band, Bluetooth Classic, BLE, Ethernet	Wi-Fi, Bluetooth Classic, BLE
Input Voltage (VIN)	3V to 3.6V	5V DC (USB-C)	6V to 24V
Cost	6.00 USD	75.00 USD	27.50 USD

Table 14: Microcontroller & Single-Board Computer Selection

Chapter 4: Design Standards and Constraints

This section dives into the established standards and constraints that guide our project's course and influence our design decisions. Adhering to industry standards and integrating constraints is fundamental in crafting a project that is not only safe and reliable but also efficient. The following chapter of the report provides an in-depth exploration on each relevant standard and thoroughly justifies the primary constraints imposed on the project.

Section 4.1: Project Standards

Standards are technical documents within engineering that are important to ensure the quality and reliability of a product or method, as well as the uniformity of specific processes. Without standards it would be difficult to ensure the quality of a product, and it would also make it difficult or impossible to integrate different technologies. Standards also ensure the safety of the manufacturers, as well as the users of the products, as there are safety requirements that have to be met and specific processes that have to be followed to ensure safe use. There are many different types of standards, including voluntary, de facto, consortia, and regulatory to name a few. A VCS, or Voluntary Consensus Standard, is a standard developed by a group of representatives of any interested party and it is subject to due process to ensure that people agree on the standard. These VCS standards can be approved through the American National Standard, or ANS, which provides it with ANSI's unique accreditation of the procedure and oversight of the approval process. Another type of standard is a De Facto, or Ad Hoc standard, which is a standard that is not always officially approved, however it is simply widely used and recognized. A consortia standard is a more broad category that has approval processes much like the ANS approval process, however they can limit participation in the approval process if they choose to. The last type of standard to be described is a regulatory standard, which is a standard that is written by or adopted by governments, and therefore they are required to be followed by law. There are also other standards, such as those developed or adopted by individual companies.

There are multiple different organizations that can publish standards. One well known organization is the American National Standards Institute. It is a private, non-profit organization that works to publish voluntary consensus standards in the United States. Publishing a standard with ANSI ensures a neutral platform for development and discussion over standards, and ANSI also provides accreditation services to ensure that organizations operate according to the recognized standards and processes, which increases the credibility and reliability of their standards. The Institute of Electrical and Electronics Engineers, commonly referred to as IEEE, is another professional, non-profit organization that can help develop standards. Unlike ANSI, which covers a wide range of products and processes, IEEE focuses on developing technological standards that relate to electrical engineering, electronics, and computer science. Another organization that is known for developing standards is the Robotic Industries Association, or RIA. As the name suggests, the standards that RIA helps to develop are focused on robotics, covering topics such as design, performance, safety, and programming. Underwriters Laboratory is an organization that develops safety standards for a wide range of industries. Something that makes UL unique is the fact that they have a long history of developing standards, and they are globally recognized and trusted, which provides standards developed by them an extra layer of credibility than some other organizations. IEC, or the International Electrotechnical Commission, is also a global organization that

develops standards. IEC is also a globally recognized organization, and they tend to work with other national standards organizations, such as ANSI in the United States or the British equivalent, the British Standards Institution, also known as BSI, in the United Kingdom. This provides standards they produce to have the credibility that comes with approving standards through the national organizations, as well as an extra layer of credibility due to the two organizations working together. The final organization to be discussed in this paper is IPC, which stands for the Institute for Printed Circuits. IPC is now known as the Association Connecting Electronics Industries, and it is a global trade association that focuses on developing standards within the electronics industry. IPC standards are often widely adopted and recognized worldwide and are known for their practicality and applicability to real-world challenges within the industry. All of the above organizations, as well as many others not listed here, help provide manufacturers and users with clear guidelines on many aspects of developing or using a product. Standards developed and published by these accredited organizations provide insight on aspects such as what materials to use, how to complete certain processes, how to make products compatible with each other, quality requirements, and safety requirements. This is beneficial to manufacturers and users alike as it allows them to ensure the safety, quality, and reliability of their products.

Section 4.1.1: Soldering Standard

IPC J-STD-001 was developed by the Association Connecting Electronics Industries, or IPC, to provide standards and requirements for the soldering processes and other aspects related to soldering. Originally published in 1992, this standard has undergone many revisions and updates to make sure that soldered joints are high quality and effective, as well as to ensure that users are completing these processes safely. Soldering is a process that joins two metal pieces together by melting solder between them. There are many different applications for soldering, many of which require clean, strong, precise connections between the parts. Because of this, it is important that there are standards in place to ensure the quality of the joints, as well as the safety of the users throughout the soldering process.

The IPC standard on soldering defines the approved manufacturing and inspection processes, as well as the approved materials that can be used. One requirement that is outlined in the standard is the importance of cleanliness. Cleanliness prevents the contamination of the materials being used, as well as the tools, ensuring the safe and effective use of these things in future products. The standard also specifies the required heating and cooling rates for different materials, and it emphasizes that the wires being soldered together cannot be damaged in any way as this could affect the quality of the connection. Should defects occur in the soldering process, the standard states that the customer's

requirements will specify if it is acceptable to rework the product or if the manufacturer is to begin again with new materials, as the defect could affect the functionality of the product. The standard is also equipped with a guide to show what the ideal solder looks like so that there is no ambiguity, as a defect could cause major issues if the job is not done properly. It specifies that the visual inspection requires both an automated optical inspection, or AOI, as well as an automated X-ray inspection, or AXI, before the product can be approved. The standard provides in depth details on how soldering is to be completed so that it is done safely and effectively. It also provides details on how the solder is to be inspected and the requirements it has to meet to ensure its quality and effectiveness. Without this standard and other ones like it, there is a chance that beginner or experienced manufacturers alike could make a mistake, causing the final product's functionality to be affected. This could happen by simply adding too much solder so that it comes into contact with a neighboring wire, pin, or pad, or adding too little solder so that the connection degrades over time and the connection between those parts is lost. Standards such as this provide customers the confidence that they are receiving a quality piece of work that will last.

The Wrench Monkey will be equipped with two custom PCBs, as well as many sensors, so therefore it will require a decent amount of soldering. Because of this, this standard is important as it will ensure the safety of the team and users, as well as the quality of the soldered joints and the effectiveness of the design.

Section 4.1.2: Wi-Fi Standard

IEEE 802.11ax, which is also called Wi-Fi 6 is the latest standard for Wi-Fi which is preceded by six older Wi-Fi standards and will most likely be followed by IEEE P802.11be in the year 2024. The original IEEE 802.11 standard was developed by the IEEE Local Area Network Standards Committee (LMSC) in 1997. The purpose of this standard is to specify the protocols to be used when implementing wireless local area network (WLAN) computer communication. In addition to those basic outcomes from implementing IEEE 802.11ax, adhering to this standard also enhances the performance of the communication between devices in areas where there is a high Wi-Fi usage density such as schools, public events, etc. Another desirable characteristic offered by the implementation of this standard is increased data security to protect user information.

Since the Wrench Monkey will be implemented using the ESP-32S microcontroller, the Wi-Fi transceiver will be operating at 2.4GHz. As previously mentioned, the Wi-Fi functionality will be used on the ESP-32S to host a Wi-Fi network that the workspace computers can access in order to use the Wrench Monkey website to request desired tools.

Section 4.1.3: Industrial Mobile Robots Standard

ANSI/RIA R15.08 is a standard that was approved in 2020 and developed by the Robotic Industries Association, or RIA, working with the American National Standards Institute, or ANSI. This standard focuses on the design, integration, and use of industrial mobile robots, also known as IMRs. The goal of this standard is to minimize the safety risk that these robots pose to anyone working with or near the devices. This standard includes the proper procedures for risk assessments, allowing the developers and users to identify potential safety risks. This standard also specifies safety requirements to be included in the device as well as guidelines for human-robot collaboration. It also specifies guidelines on how to safely install and integrate the robot into a workplace, as well as the importance of proper training on how to use the device.

Aspects of this standard apply to the Wrench Monkey as it has the capability to be used within an industrial environment, so it would therefore have to meet the requirements of this standard to be considered safe to use.

Section 4.1.4: PCB Design Standard

ANSI/IPC-2221, titled “Generic Standard on Printed Board Design, was published originally in 2003. It was published by the Association Connecting Electronics Industries, or IPC, working with the American National Standards Institute, or ANSI. Since its publication, there have been many revisions and updates to the standard. It provides guidelines and requirements for PCB design. It covers factors such as board size and shape, component placement, electrical characteristic requirements, mechanical considerations such as tolerances, and thermal management guidelines. It also includes guidelines on its design to ensure ease of fabrication, as well as information on environmental considerations to reduce the negative environmental impact of the materials and processes required to create a PCB.

The Wrench Monkey will contain two custom PCBs, and therefore this standard will have to be considered and followed in order to meet the project requirements and create a functional product.

Section 4.1.5: Lithium Battery Standard

UL 1642 is a safety standard regarding Lithium Batteries. Initially it was published in 1995 by Underwriters Laboratories, or UL, and it has since had multiple revisions and updates. This standard covers aspects such as testing to determine the safety of lithium batteries in a variety of different conditions, as well as the construction of the cell to ensure that they are able to withstand normal operating conditions without safety concerns. It also addresses the stability of the electrolyte used in the batteries to ensure long term chemical stability, and requires mechanisms to be included to prevent over charging of the battery which could lead to safety hazards. This standard ensures the overall quality and safety of a lithium battery.

The Wrench Monkey will include a 12V Lithium-Ion battery. As this standard covers the safety standards for all lithium batteries, the battery chosen for this project will have to meet these standards to ensure the safety, functionality, and longevity of the product.

Section 4.1.6: LED Standard

IEC 62031:2018 was originally published by the International Electrotechnical Commission, or IEC, in 2018. This standard is titled “LED modules for general lighting - Performance requirements.” The standard specifies the performance requirements of an LED including mechanical properties, electrical characteristics, and luminous flux. It also specifies the methods and procedures to test the performance characteristics to determine if they have met the requirements, as well as many safety requirements and concerns that should be taken into consideration when designing, manufacturing, or using an LED.

The Wrench Monkey will utilize an individually addressable LED strip in order to highlight the requested tool. These standards affect the project because they ensure that the LEDs that are incorporated into the final design are safe, reliable, and of acceptable quality. This is important as it ensures the quality and functionality of the final product that is being designed.

Section 4.1.7: C Programming Language Standard

The most recent C programming standard is ISO/IEC 9899:2018, which was published in December of 2018. Starting from ANSI C89, this standard is intended to allow for the portability and compatibility of C code across different compilers and tools. The most recent version of this standard added new data types and some other functionalities.

Section 4.1.8: Python Programming Standard

PEP 8, the Python Enhancement Proposal for code style and readability, provides guidelines for consistent Python code formatting. It covers aspects such as indentation, naming conventions, whitespace usage, imports organization, and comments structure to name a few. This standard can and should be applied to all programming languages. Adhering to PEP 8 ensures code readability, consistency, and maintainability across Python projects. PEP 8's emphasis on clean, readable code contributes to efficient software development practices and improves codebase quality over time.

In the context of the Wrench Monkey project, Python will be used to perform image processing for the line following capabilities. PEP 8's guidelines will be used to maintain clear and understandable code for this critical function.

Section 4.1.9: Inter-Integrated Circuit (I2C)

I2C is a communication standard developed by Philips Semiconductors in 1982. This standard enables the communication between several low-speed devices that can act as masters or slaves using two wires—one of the wires being the serial data line (SDL) and the other being the serial clock line (SCL). One of the most useful properties of this standard is the ability to communicate with various devices by using the devices' addresses while only needing two wires independent of the number of devices that are connected to the bus.

I2C will be used to communicate between the ESP-32S microcontroller and the camera selected to perform the visual control of Wrench Monkey. Due to the robustness of I2C, if an additional device needs to be added to the bus, there will not be any changes to the communication between the ESP-32S and the camera.

Section 4.1.10: Portable and Rechargeable Batteries Standards

ANSI C18.2M is a standard regarding portable rechargeable cells and batteries. It was published by the National Electrical Manufacturers Association, or NEMA, and approved by the American National Standards Institute, or ANSI. There are two parts to this standard, part one covers general information and specifications, while part two covers the safety standards. Part one covers batteries based on nickel-cadmium, nickel-metal hydride, and lithium ion electrochemical systems. It assures the electrical and physical compatibility of products between different manufacturers by providing standards for aspects such as dimension, polarity, charge methods, and testing conditions. Part two specifies the performance requirements for the same type of rechargeable cells and batteries, which helps ensure the quality and safety of these products.

The Wrench Monkey will be equipped with a lithium-ion battery, so this standard will provide assurances that the battery used is reliable, safe, and compatible with the design of the overall project.

Section 4.2: Project Constraints

A project constraint is any limitation placed on a project's design and completion that needs to be taken into consideration. Common constraints include factors such as economic, time, availability, safety, size and weight, testing, environmental, technical, and usability constraints. There are many constraints that need to be considered within this project.

Section 4.2.1: Economic Constraints

One major constraint in every project is economic constraints. Whether a project is completed for a customer or for a personal project, there is always some sort of budget that has to be adhered to. When working on a project for a company, expenses can include labor costs, material costs, the cost for the workspace, as well as aspects such as transportation costs to move or deliver the product. It is important to consider all of these things when determining the budget and the scope of a project. If a customer is requesting a product, it may require the manufacturer to do some research and sit down with the customer to discuss trade-offs they need to consider. Requesting a product with many features and functionalities would likely add to the material costs and the labor costs as it would take the manufacturer more time to complete the project. Requesting custom or high quality parts would also likely increase the material cost. It is necessary that the customer and the manufacturer are both aware of these limitations so that the budget provided is large enough to accomplish all of the requested details, as well as this provides the customer chances to potentially simplify the project for the purposes of saving money. Another aspect of designing a project that would affect the budget is the choice of materials and the intended use of the product. While choosing the cheaper materials may make financial sense, it is not always the best option. Choosing a cheaper option can potentially increase the chances of it failing and needing replacement. Replacing a cheap part multiple times may end up costing more overall than opting for a sturdier, higher quality, more expensive alternative at the start of the project. It is also important to consider the intended use of the product being designed. There are cases, such as when creating a prototype or proof of concept, that the quality and durability of a part is not as important and therefore it would be acceptable to use a cheaper alternative. However, when making a final product, choosing a higher quality part in the beginning could help decrease manufacturing costs. It could also help decrease the cost to upkeep the product once the customer is using it should the part be in a place where gradual degradation due to ample use is expected. An example of this is including higher quality tires for a vehicle working somewhere such as a construction zone. While cheaper tires may become worn down quickly in the rough terrain, using higher quality tires would require that they be replaced less often, therefore saving the customer money overall.

For the Wrench Monkey, the only costs we are taking into account are the material costs. As this project is not sponsored, the project costs are limited to what the four team members can afford to pay out of pocket. Because of this, the team has to consider the cost of parts when determining the scope of the project. It is also important to consider the different options on the market to determine how expensive the necessary components will be, and if there are cheaper alternatives available that would be high enough quality for their intended purpose in this project, to ensure that the overall project will be affordable. The estimated budget for this project is around \$375, and the goal is to keep it well under \$1000.

Section 4.2.2: Time Constraints

Another common constraint that applies to nearly every project is time. Whether it is requested by the customer, a manager, a professor, or set by the individual, there will almost always be a deadline that things need to be done by. It is important to consider the deadline when determining the scope of a project, as well as the availability of the necessary materials. Should a project have a strict deadline, the manufacturer and the customer will have to do research and be realistic about what can be accomplished in the given time frame. When determining the expected timeframe in which to complete a project, the manufacturer will have to consider not only the time it will take to assemble the product, but also time will need to be factored in to address anything that may go wrong. This includes things like receiving faulty parts and having to reorder, long shipping times, and issues when testing the product causing a setback as the team has to determine and fix the issue. It is also important to consider the availability of necessary materials as factors such as supply chain issues, shipping times, and factors such as import and export restrictions set by governments can affect the ability to receive parts in time. It is also important to consider the budget of the project and the available facilities. If the budget is higher, the manufacturer could potentially speed up the process by devoting more workers to the project. This would increase labor costs, however it may be a trade-off that the customer is willing to make. Considering the available facilities is also important as if the manufacturer is equipped with a large amount of high tech equipment that is applicable to the project, than parts of the process can be sped up by utilizing it, however if the facility is smaller and has less or slower equipment, that needs to be taken into consideration. The manufacturer can also decide that, should the budget allow it, pre-assembled parts can be ordered and incorporated, or specific aspects of the project can be outsourced. However, it may be better financially to accomplish more themselves, which would likely take longer for some components. Should it be decided that given the available budget and resources the project is unrealistic for the proposed timeline, it will become necessary for the manufacturer to meet in order to either narrow down the scope of the project, or extend the allotted timeline.

In the case of this project, the deadline is a fixed date with no option to extend the timeline for any reason. Because of this, the scope of this project had to be carefully thought out and researched to determine the probability of accomplishing all the set goals. This senior design team is composed of four students. Each member of this team is currently a full time student with multiple other courses that need to be completed, as well as a few members of the team having internships in addition to classes. The team is also limited to two semesters, the spring and the summer, and the summer semester is shorter than the fall and spring semesters which decreases the amount of time to complete the project. Because of all of the above factors, the project scope was determined by carefully considering and researching how long each aspect of the project was expected to take, and then making sure that extra time was factored

in for troubleshooting and fixing potential issues, as well as attempting to plan for unexpected delays so that the project could still be completed on time. Unexpected delays in the case of this project could include things such as a member of the team being unable to work on the project for a time period due to becoming sick or becoming too busy with other classes, as well as aspects such as delays in the shipping process when ordering crucial parts which could potentially put a hold on the completion of the project.

Section 4.2.3: Availability Constraints

Another constraint to be considered is availability. Project managers need to consider the availability of the items that are needed to complete a project to determine if the project is possible. For example, if the project requires a specific part in order to be successful, it has to be considered if that part is readily available at a price that will fall within budget. Due to political, environmental, and economical factors, some products may become unavailable or difficult to obtain. Should a product not be within budget or not be available in the allotted time frame, the team would have to consider raising the budget, extending the deadline, or finding an alternative part that may work as a substitute in order to complete the project.

Section 4.2.4: Safety Constraints

One constraint that is extremely important is safety. No matter what project is being designed, safety for both the user and the team making the project have to be taken into consideration. When designing and building a project, engineers have to consider what machinery and methods would be required to create the product and they have to determine a safe way to do such tasks. They also have to incorporate safety features within the design itself to reduce the risk of injury for users. In the case of the Wrench Monkey, a sensor will be added in order to stop the toolbox and alert the users if there is an object obstructing its path. This is important as not only will it prevent possible damage to the toolbox or other items in the path, but it would also prevent injury to anyone who might be standing in or crossing through the path that the Wrench Monkey is following.

Section 4.2.5: Size and Weight Constraints

When designing a project, the size and weight of the final project need to be taken into consideration. The function and location of the item need to be considered as it would determine the desired, or maximum, size and weight the product can be. For example, if the product must be carried around by the user, it should be light enough for the average person to carry, as well as small enough for them to pick up. If it is on wheels, the designer may be able to make it heavier as it would be easier to relocate. The amount of space that the product takes up is also important to consider because if the item is intended to be stored or used in a large workshop, it can be larger, however if the intended use is for it to be portable or for it to be used within a small lab than it has to be designed to be more compact. In the case of the Wrench Monkey, as it's intended use is

within a workshop it is able to be larger. However placing it on motorized wheels requires that it not be so heavy that the amount of torque within the chosen motors cannot move it from workstation to workstation.

Section 4.2.6: Testing Constraints

Another constraint to consider is the testing constraints. Project managers have to consider if they have the appropriate space and equipment to test their products throughout the design and building process. In the case of the Wrench Monkey, the team has to be able to test each component, as well as the final project. A location also has to be found for a demonstration to be completed at the end of Senior Design 2.

Section 4.2.7: Environmental Constraints

When designing a project, it is important to take into account the environmental impact that the project will have. When choosing the materials and processes by which the product is to be built, there are ways to mitigate the environmental impact to be had. For example, when designing a project, it is important to consider the expected use and lifespan of not only the overall product but also the individual components. If there is a component that is expected to experience gradual deterioration due to heavy use, choosing a material that is stronger would be beneficial as it would extend the lifespan of the part and require it to be replaced less frequently. This is beneficial to the environment because it would decrease the amount of disposable waste produced from the product.

It is also important to consider the environmental impact of the individual components. For example, the Wrench Monkey will be powered by a lithium-ion battery. A lithium-ion battery was selected for this project over other options because of its energy density, which allows it to have a higher energy efficiency than other options which reduces overall energy consumption. They are also able to be recycled in order to ensure minimal negative environmental impacts. Unfortunately, lithium-ion batteries are not often disposed of correctly, leading them to leach hazardous chemicals into the nearby soil and water, which could harm people as well as ecosystems. However there are ways to properly dispose of them, which not only prevents the hazardous conditions, but it also allows for certain resources to be reused in other products, which is beneficial to the environment.

Section 4.2.8: Technical Constraints

Technical constraints are project limitations based off of the technology that is available, as well as compatibility with existing systems. When designing a project, it is important to consider current, existing technology and how it will be

incorporated into, or how it will interact with, the product being built. If the intent of a project is to interact with or work in conjunction with another existing piece of technology, it is important to consider how to make the two devices compatible. That will affect the technology that can be incorporated into a project, or it will require a higher budget, a longer timeline, or some other trade off in order to ensure compatibility.

It is also important to consider what existing technology can be incorporated into a project to accomplish its objectives, as well as how willing a team is to attempt to create a new technology. In the case of the Wrench Monkey, due to factors such as time constraints, it was important that the project is able to be accomplished utilizing exclusively existing technology. If a project manager should choose to create a new technology for their product, it is important for them to understand the time, funding, and research that would be required to go into it. Therefore it is more common for projects to be completed with only existing technology.

Section 4.2.9: Usability Constraints

This constraint refers to the ease of use of a product. When designing a project, it is important to consider who the target audience is and how much knowledge and training they will require to use the product. If the final product is produced with the intention of being utilized by experts in a field, designers can afford to make it more complicated as the users will understand how it works and they will likely be more willing to go through training in order to use it correctly. If the product is intended for public use, it should be assumed that the user will have very little knowledge of the product, its purpose, and its use when they attempt to use it for the first time. In this case, it is important to make the product very simple, straightforward, and easy to use with little to no training.

The Wrench Monkey is being designed to be simple to use with minimal training required. Creating a user friendly interface as well as an easy set up is required to make this product easy to operate. To use the Wrench Monkey, the user will simply have to log into their work station and select the tool they need. The Wrench Monkey will then leave wherever it currently is waiting and make its way to the requested workstation. It will then illuminate the requested tool automatically. While more advanced features will be available, such as the ability to preset tasks with a combination of tools, basic use of this product will require the user to have very little knowledge on how it works, and it will also require only a few buttons to be pressed before it will complete the task autonomously, making it simple to learn and utilize in a busy workspace.

Chapter 5: Comparison of Chat GPT with Other Similar Platforms

Section 5.1: Chat GPT and Other Similar Products

Chat GPT, which stands for Generative Pre-train Transformer, is a chatbot that was first developed and launched by company OpenAI in November of 2022. The first chatbot, at the time known as a chatterbot, was developed in 1966 by Joseph Wizenbaum and called ELIZA. Since then, there have been multiple attempts to improve on the idea, such as A.L.I.C.E., Siri, and Alexa to name a few. The launch of the large language model Chat GPT introduced new features and capabilities, such as being able to learn from past interactions as well as training data, giving it the capability to constantly grow and self improve as more people interact with it. This has caused it to rapidly gain popularity as people use it to aid them in their jobs, education, as well as just holding a conversation with the chatbot to explore its capabilities.

Alternatives to Chat GPT have also since launched with similar features, such as Google Bard, Copy.ai, Hex.AI, and Microsoft Bing, which have various levels of accuracy, accessibility, and popularity. The purpose of chatbots, such as Chat GPT, is to respond to written prompts to answer questions as if the user were to be having a conversation with another person. Through machine learning, Chat GPT is able to sift through massive amounts of data and generate responses based on that data. This can be useful as it allows someone to ask a question and have it answered quickly, drawing on multiple sources to compile a comprehensive answer that otherwise could have taken the user much longer to find through traditional search means such as Google. Chat GPT also has the ability to remember what it has previously output, which allows for the user to ask follow up questions. For example, the user could ask for clarification on the previous answer and be provided with a prompt response to further explain the topic and help clear up confusion without simply restating the previous output.

Section 5.1.1: A History and Comparison of Chatbots

As previously mentioned, there have been many chatbots created since the development of ELIZA in 1966. Early chatbots such as ELIZA were created to mimic human conversation and act as a Rogerian psychotherapist, and this was accomplished by using pattern matching and substitution methodology. The chatbot would use the user input and output one of many pre-scripted responses. ELIZA lacked the ability to fully understand and generate unique responses for the user. In 1995, A.L.I.C.E. was created. A.L.I.C.E. stands for Artificial Linguistic Internet Computer Entity, and it uses artificial intelligence markup language, or AIML. A.L.I.C.E is made to simulate the experience of talking to an actual person over the internet. Years later in 2010, a more modern form of a chatbot was created known as Siri. Siri was marketed as an intelligent personal

assistant, and was quickly followed by similar products such as Google Assistant, Cortana, and Alexa. These programs allowed for the user to ask questions and also instruct the program to complete certain tasks. The next wave of chatbots came with Chat GPT and other similar Artificial Intelligence programs.

There are now a wide range of alternatives to Chat GPT so users have many options depending on what they are hoping to get out of the product. Key factors in choosing which platform to utilize when searching for the best AI product are accessibility, accuracy, and speed. Products such as Chat GPT, Hix.ai, Chatsonic, Jasper Chat, and Copy.ai all have subscription options for the user to access higher quality, faster responses, however they also offer options that are free to access, however these free option often have less features available to use than the paid service. However, options such as Microsoft Bing, Youchat, and Perplexity AI are all free for anyone to use. Another factor to take into consideration when choosing an AI is the functionalities offered and accuracy of the responses. For example, Perplexity AI is unable to retrieve previous responses, and it also has ethical issues as it is more prone to produce plagiarized responses than other programs. Google Bard also has issues with providing accurate and original responses as it is still in an experimental phase. Because of this users may decide to avoid using these platforms. The program Hix.ai offers a wide range of functionalities which include the ability to analyze pdf documents, and even summarize youtube videos with only the free version of the product, which may make it a desirable alternative to Chat GPT if that is something the user is looking for. Microsoft Bing is powered by GPT-4, which could also appeal to users who want to use the functionalities of the subscription based Chat GPT option without paying a fee, however it does tend to run slower than other programs. Most modern chatbots are equipped with the same basic features and functionalities, however there are differences between each individual platform. This allows for users to choose which option is most beneficial to them based on factors such as speed of response, accuracy of information, price of using the platform, and the functionalities it offers.

Section 5.2: Chat GPT in Education

The use of Chat GPT and other similar generative Artificial Intelligence tools within education is a topic that was widely debated, especially immediately following the 2022 Chat GPT release. Several school districts were quick to ban the use of Chat GPT on school networks. Their concern was that it would cause students to cheat on everything by just asking the chatbot to generate the answer instead of using it as a learning tool to help them understand the material. As it continues to grow, the benefits of using such a tool within education have become apparent, and educators and students alike are quickly learning to embrace it and incorporate it into the learning process.

If utilized correctly, Chat GPT could greatly enhance the learning experience through its ability to tailor to the individual to provide a personalized learning experience, as well as increase a students efficiency. However, used incorrectly,

it can have the opposite effect by hindering a student's educational experience to the point where they begin to lose important skills such as critical thinking and the ability to learn independently. Because of this, many educators are hoping to incorporate chatbots into their teaching to not only aid themselves in tasks such as lesson planning, but it also provides students the opportunity to learn how to properly use these tools in a way that will benefit them without leading to an unhealthy overreliance on the tool.

Section 5.2.1: Benefits of Chat GPT in Senior Design

The use of Chat GPT in a large project, such as a Senior Design project, can greatly help the learning process if used correctly. However, it could also cause hindrances to the learning process as well as the overall project if the users are not careful. One way that the use of Chat GPT would be beneficial to use within a Senior Design project is due to its ability to quickly provide summaries and overviews of large amounts of information. For example, reading articles and research papers to find ones that are most relevant is a very time consuming process. With Chat GPT, a student could request the chatbot to summarize a paper, or to identify key information within it. This could greatly improve efficiency as the student no longer has to read and analyze papers that turn out to be irrelevant. Using Chat GPT to identify only the most relevant and helpful articles would allow the student to spend more time analyzing and understanding the content of the paper, leading to a deeper understanding of the topic. Similarly, asking Chat GPT to help analyze the datasheet of a specific device, or compare multiple datasheets, could help the team quickly and efficiently identify the optimal product to utilize in their project without the need to read through multiple data sheets.

Another benefit of the use of Chat GPT within a Senior Design project is that it can help students get a deeper understanding of different concepts, products, and devices relevant to their project. This is because of Chat GPT's ability to compile large amounts of data from a variety of sources, as well as recall past responses within a conversation to provide the ability for a user to ask follow up questions. Oftentimes during a Senior Design project, students are utilizing devices such as sensors and concepts that they have had little to no experience with. Prior to the Senior Design class, many students have little practical experience applying the concepts they have learned throughout college. Because of this, many concepts learned early on may have been forgotten, or a student may have a hard time understanding how something works practically when incorporated into a larger design. Taking the time to get a deeper understanding of how these concepts can be practically applied and how it will affect the overall project is imperative to making a design work. Chat GPT can help with this, as it may be hard to find a website or research paper that will directly answer specific questions. Public forums can be beneficial as you can ask other people with more knowledge about the topic to help you out, however this risks a person providing incorrect information, misunderstanding the question, or not answering in a timely manner and not benefitting the student.

Being unable to find the answer in a timely manner can be frustrating and discouraging, however using Chat GPT can expedite this research process and help the student gain a deeper understanding of what they are trying to learn. When asking Chat GPT a question about how to use a specific motor, sensor, or how to apply a concept learned in a class, the user can be specific about what the use is and gain a more personalized response. It also allows for a quick response, and the ability for the user to have an ongoing conversation, asking for the chatbot to clarify or further elaborate on specific details. This would benefit the project as it could potentially reduce the number of failed attempts at accomplishing certain parts of the overall project.

Additionally, students can also utilize Chat GPT as a way to aid in writing the final project paper. Utilizing Chat GPT to help writing the paper can be done in one of two ways, and depending on which way it is done it can either be a beneficial tool or a major issue. The first way is by utilizing it as a tool to check the writing that has been done, and the second way is by just asking Chat GPT to write up parts of the paper. Utilizing Chat GPT to help check over sections of the paper for grammar mistakes, formatting errors, and small inaccuracies could be very helpful in completing the project as papers of this length are inevitably going to contain some writing errors. Chat GPT could likely identify most errors that may be harder to catch, which would be beneficial as it would allow the team more time to focus on the content of the writing instead of having to worry as much about the grammar and formatting. Chat GPT could also be used as an advanced thesaurus by asking for a way to reword a phrase or sentence to better convey an idea. This could also be beneficial as it would help the reader better understand the content of the paper. Using Chat GPT to write the paper, however, would be detrimental as it could provide false information and Chat GPT can sometimes output responses that are easy to identify as written by artificial intelligence. It also doesn't require the person that should be writing the paper to have a full understanding of what they are writing about, which could lead to issues in explaining the concepts later on in the presentation. Ethically, using Chat GPT to write sections of the paper without proper citations is also plagiarism as it is not original work written by the team.

Section 5.2.2: Drawbacks of Chat GPT in Senior Design

As previously stated, although Chat GPT has many benefits, if used incorrectly, it could greatly hinder the learning experience. One example of this is by a student or team blindly trusting and believing the outputs of the chatbot with no effort to verify the information. While Chat GPT can be accurate and extremely useful in expediting the research process, it also can make mistakes. The chatbot gains its information from data found on the internet, and then compiles it to create a response. However, it is not always able to distinguish between accurate and inaccurate information. If something is written and published to the internet, such as a research paper, wikipedia article, or social media post, it is incorporated into Chat GPT's training data, and Chat GPT will take that written data as fact and be unable to distinguish which piece of information is correct if it is given two

conflicting statements. Because of this, when writing a response, sometimes a piece of incorrect information is utilized and can then render the entire response invalid. People who choose to utilize Chat GPT in any way need to be aware of this limitation and use their own judgment to determine if the output is reasonable. Within the scope of a project such as Senior Design, if a student or team decides to believe everything that Chat GPT says without verifying the details themselves through research and testing, it could lead them to have issues within their project that they do not know how to address as they may not fully understand what they did or the logic behind why they did it. This could not only be detrimental to the outcome of a project as it may become harder to pinpoint where the team went wrong as they may still believe that that part is correct since it was provided by the chatbot, but it also causes the students to not take the time to do any of the research and learning themselves.

Similarly, another way in which Chat GPT could hinder the learning process of students if used incorrectly is by causing them to become over reliant on it. It is important to understand how and why different things work. Senior Design provides engineering students with the unique opportunity to learn how to apply different concepts and devices that they have learned about conceptually throughout college, as well as new ones they have no prior experience with, and learn how to make them all work together to accomplish a goal. Senior Design projects help teach how to work as a team, time and project management, how to do practical research and application of devices and concepts, as well as how to identify issues and troubleshoot them to find a solution. In the end, students should have a full comprehensive experience of what it is like to work on a real life engineering project from start to finish. Relying too heavily on Chat GPT will considerably diminish the value of the learning experience. For example, if they ask Chat GPT to give them the best product to use for a specific part of the project, they lose the opportunity to learn how to do practical research and product comparisons through datasheets, as well as learning about how to understand tradeoffs and determine which product elements are most important to them. Additionally, if they ask for it to give them detailed step-by-step instructions on how to accomplish a certain task, they lose the opportunity to use critical thinking and logic to determine how to do something. Instead of applying the knowledge they have learned and doing research to determine something, they are blindly following instructions and not making the effort to understand how and why it works.

Section 5.2.3: Conclusion

Overall, if used correctly, Chat GPT can be an amazing tool that can aid in the understanding and efficiency of a project, however if used incorrectly it can significantly hinder the student's ability to learn and gain any valuable skills and experience from the project. Students can use Chat GPT to increase efficiency in the research project by having it summarize papers to more quickly find the relevant ones, and it can also be used to compare datasheets of different product options to determine the optimal one for the team to choose for their project.

Chat GPT can also be utilized to help students gain a deeper understanding of how things work and how they might apply previous knowledge practically. This can help expedite the design of the project as a deeper understanding of the individual parts and concepts and how they all interact as a whole could lead to less errors in initial testing. Chat GPT can also be used as a writing assistant to help reword sentences and phrases to better convey an idea, or to check for grammar and formatting mistakes that may be easily overlooked. These are all ways in which Chat GPT can help students make the most out their Senior Design experience, however a student using Chat GPT to write the paper, do the research, or make decisions for them is only causing them and their team to lose understanding of the project and to lose valuable project experience that could help them in their future. Additionally, relying on Chat GPT for everything without verifying the results could also lead to incorrect information being included or factored into the project, which could cause issues with the project's functionality and a delay in being able to complete it. So while Chat GPT and other similar artificial intelligence programs and chatbots can be an incredible tool, users need to be aware of their limitations and also be aware that over reliance on these programs is unhealthy.

Chapter 10: Administrative Content

This section gives a summary of the financial aspects related to the Robot Monkey project. It includes details on budget estimates, bill of materials, and work allocation for designing and constructing the Robot Monkey. This chapter will be further developed in Senior Design 2 as we acquire additional parts and finalize the total cost.

Section 10.1: Budget and Financing

This section provides details on an item, the quantity of that item needed, its anticipated per unit cost, and the total anticipated cost for each part. It's important to note that the specific parts for the project are not listed here; rather, this is an overview of the essential parts and devices required, which may be modified at a later date. From this budget table, it can be seen that the total estimated cost will be less than \$1000, hopefully around \$375 as shown below. Each person in the group is expected to contribute exactly one quarter of the total final cost.

Item	Quantity	Unit Cost	Total
Toolbox	1	\$20	\$20
Color Sensor	2	\$8	\$16
Color Sensor Dev Board	2	\$13	\$26

Item	Quantity	Unit Cost	Total
Ultrasonic Sensor	3	\$1.80	\$5.40
Camera module	2		
Motors	2-4	\$28	\$56 - \$112
Wheels (2-pack)	2	\$14	\$28
T-Slotted Aluminum Rails (12")	≥2	\$8	≥\$16
T-Slotted Aluminum Rails (36")	≥2	\$16	≥\$32
LED light strip	1	\$30	\$30
12V Battery	1	\$30	\$30
Tools (kit)	1	\$20	\$20
MCU Dev Boards	2	\$10	\$20
PCBs	1	\$20	\$20

Total Estimated Cost	\$375.4
----------------------	---------

Table 15: Estimated Budget

Section 10.2: Bill of Materials

This table is in progress and will be continued to be updated throughout the project.

Item	Manufacturer	Quantity	Total Price
Toolbox		1	\$20
Motors	Bringsmart	2	\$57.98
Wheel Adaptor	Pololu	2	\$11.90
Tires	HobbyPark	4	\$14.97
ESP-32S	Ai-Thinker	3	\$18
Color Sensor Development Kit	MIKROE	2	\$14

Pressure Sensors		2	\$13
Hex Couplers	Uxcell	2	\$9.89

Table 16: Bill of Materials

Section 10.3: Project Milestones for Senior Design 1 and Senior Design 2

The table below shows the project milestones for the research and writing portion of this project.

Task	Description	Start Date	End Date
Recruiting	Getting all team members recruited	01/09/2024	01/09/2024
Project Topic	Having several in person meeting to decide on the project idea	01/11/2024	01/18/2024
D & C	Creating the second chapter, or the project proposal. (10 Pages Total)	01/18/2024	02/02/2024
Rough Draft	Writing the first 60 pages of our Senior Design document. (15 pages per person)	02/02/2024	03/29/2024
Final Document	Adding 60 more pages to the rough draft making it 120 pages total (30 pages per person)	03/29/2024	04/23/2024

Table 17: Research and Writing Milestones

The table below shows the project milestones for the designing and prototyping phases of this project.

Task	Description	Start Date	End Date
Drive System Design	Selection of drive system and CAD drawing of chassis.	2/05/2024	2/26/2024
Part Selection	Determine components that will best fit the needs of Wrench Monkey.	2/12/2024	3/05/2024
Subsystem Prototyping	Prototype the subsystems such as the motor control and sensor.	2/19/2024	3/11/2024

PCB Design	Design control boards for the project (power, sensing, motor control).	3/18/2024	4/07/2024
Website Prototype	Creation of website that will be used to request tools.	3/19/2024	4/04/2024
System Integration	Putting together all the subsystems. Testing all the subsystems.	4/08/2024	4/23/2024

Table 18: Design and Prototype Milestones

Section 10.4: Work Distribution

Section 10.4.1: Team Leader

As part of the recommendations for effective time management in Senior Design 1, we decided to elect a team leader to keep everyone on track. Our team leader for this project is Rachael Sak. Rachael's responsibilities as team leader include:

- Task Allocation: Assigning tasks to team members based on their skills, availability, and project requirements. Each team member will have a clear understanding of their responsibilities and deadlines.
- Progress Monitoring: Regularly monitoring the progress of each team member and the overall project timeline. Identification of any potential issues early on and takes necessary actions to address them.
- Communication Facilitation: Facilitating communication between team members and ensures everyone will be informed about project updates, meetings, and important decisions.
- Documentation Oversight: Oversees the documentation process and verifies it is complete, accurate, and citations are made correctly.

Section 10.4.2: Discord/Group Chat

To optimize communication and teamwork among our team members, we chose to use both an SMS group chat and a private Discord server. Each platform offers unique advantages tailored to our Senior Design project.

As our primary source of communication, we utilized an SMS group chat instead of Discord. While Discord offers features such as large file sizes, instant messaging, and voice channels for easy communication, the SMS group chat was preferred for its direct reachability without requiring internet connection. Additionally, we implemented a Discord bot to automate progress tracking by requesting weekly updates from each team member every Monday morning in the form of the following three questions:

1. What did you do last week?
2. What will you do this week?
3. Are there any blockers or impediments preventing you from doing your work?

This combination of SMS messaging and Discord bot integration optimized our communication strategy, ensuring we would not get behind on tasks.

Section 10.4.3: Estimated Table of Work Distributions

Due to the dynamic nature of our project and the varying tasks involved in Senior Design 1, the table of work distributions among team members, shown below, is a rough estimate.

Task Description	Primary Team Member	Secondary Team Member
Research RFID	William Wandelt	Rachael Sak
Research Motors	William Wandelt	Matthew Crespo
Research Strain Gauge	Rachael Sak	William Wandelt
Research Color Sensor	Matthew Crespo	William Wandelt
Research Cameras	Matthew Crespo	Matthew Trump
Research Microcontrollers	Matthew Trump	Matthew Crespo
Research Full Stack Productions	Matthew Trump	Rachel Sak
Research Controllers	Matthew Crespo	William Wandelt

Table 19: Work Distribution

We hereby declare that we have not copied more than 7 pages from Large Language Models (LLM).

Appendix A

Admin. "Tool Chest Buyers Guide: Which Tool Chest Do I Need?" *Help & Advice*, 29 Jan. 2024, www.sgs-engineering.com/help-advice/which-tool-chest-do-i-need.

"Bang Bang - BLRS." BLRS Wiki, <https://wiki.purduesigbots.com/software/control-algorithms/bang-bang>. Accessed 9 March 2024.

Gomes, M. V., Bassora, L. A., Morandin, O., & Vivaldini, K. C. T. (2016). PID control applied on a line-follower AGV using a RGB camera. *2016 IEEE 19th International Conference on Intelligent Transportation Systems (ITSC)*. <https://doi.org/10.1109/itsc.2016.7795553>

Gunn, Erik. "Smart Toolbox." *Municipal Sewer and Water*, 31 Oct. 2017, www.mswmag.com/editorial/2012/04/smart_toolbox.

Heaven, W. D. (2023, April 7). *CHATGPT is going to change education, not destroy it*. MIT Technology Review. <https://www.technologyreview.com/2023/04/06/1071059/chatgpt-change-not-destroy-education-openai/>

HIX.AI. (2023, September 29). *10 CHATGPT Alternatives & Competitors (free and paid)*. PCWorld. <https://www.pcworld.com/article/2086819/chatgpt-alternatives.html>

Ina. (2023, July 26). *The history of Chatbots – from Eliza to chatgpt*. AI-chatbot software for complex requirements. <https://onlim.com/en/the-history-of-chatbots/>

"RFID Tool Management Equipment." *RFID Smart Toolbox-Guangzhou Rovinj Mdt InfoTech Co., Ltd*, en.rovinj.cn/index.php?s=index%2Fshow%2Findex&id=212. Accessed 2 Feb. 2024.

Rossiter, J. A. (2013). *Model-based predictive control a practical approach*. CRC Press.

"Smart Tool Box." *Tool Raptors Ltd*, www.toolraptors.co.uk/smart-tool-box. Accessed 2 Feb. 2024.

"Smart Tool Cabinet." *Tramontina Global*, global.tramontina.com/en/pro/smart-tool-cabinet. Accessed 2 Feb. 2024.

"What Is Lamp Stack?" *IBM*, www.ibm.com/topics/lamp-stack. Accessed 1 Mar. 2024.

- “What Is The Mern Stack? Introduction & Examples.” *MongoDB*, www.mongodb.com/mern-stack. Accessed 1 Mar. 2024.
- “ESP32.” *ESP32 Wi-Fi & Bluetooth SoC | Espressif Systems*, www.espressif.com/en/products/socs/esp32. Accessed 2 Mar. 2024.
- Raspberry Pi 4 Model B Specifications – Raspberry Pi*, www.raspberrypi.com/products/raspberry-pi-4-model-b/specifications/. Accessed 2 Mar. 2024.
- “Arduino® Uno R4 WIFI.” *Arduino Online Shop*, store-usa.arduino.cc/products/uno-r4-wifi?selectedStore=us. Accessed 2 Mar. 2024.
- “PEP 8 – Style Guide for Python Code.” *Python Enhancement Proposals (PEPs)*, peps.python.org/pep-0008/. Accessed 4 Mar. 2024.
- Yu, H. (2023). Reflection on whether chat GPT should be banned by academia from the perspective of education and teaching. *Frontiers in Psychology*, 14. <https://doi.org/10.3389/fpsyg.2023.1181712>