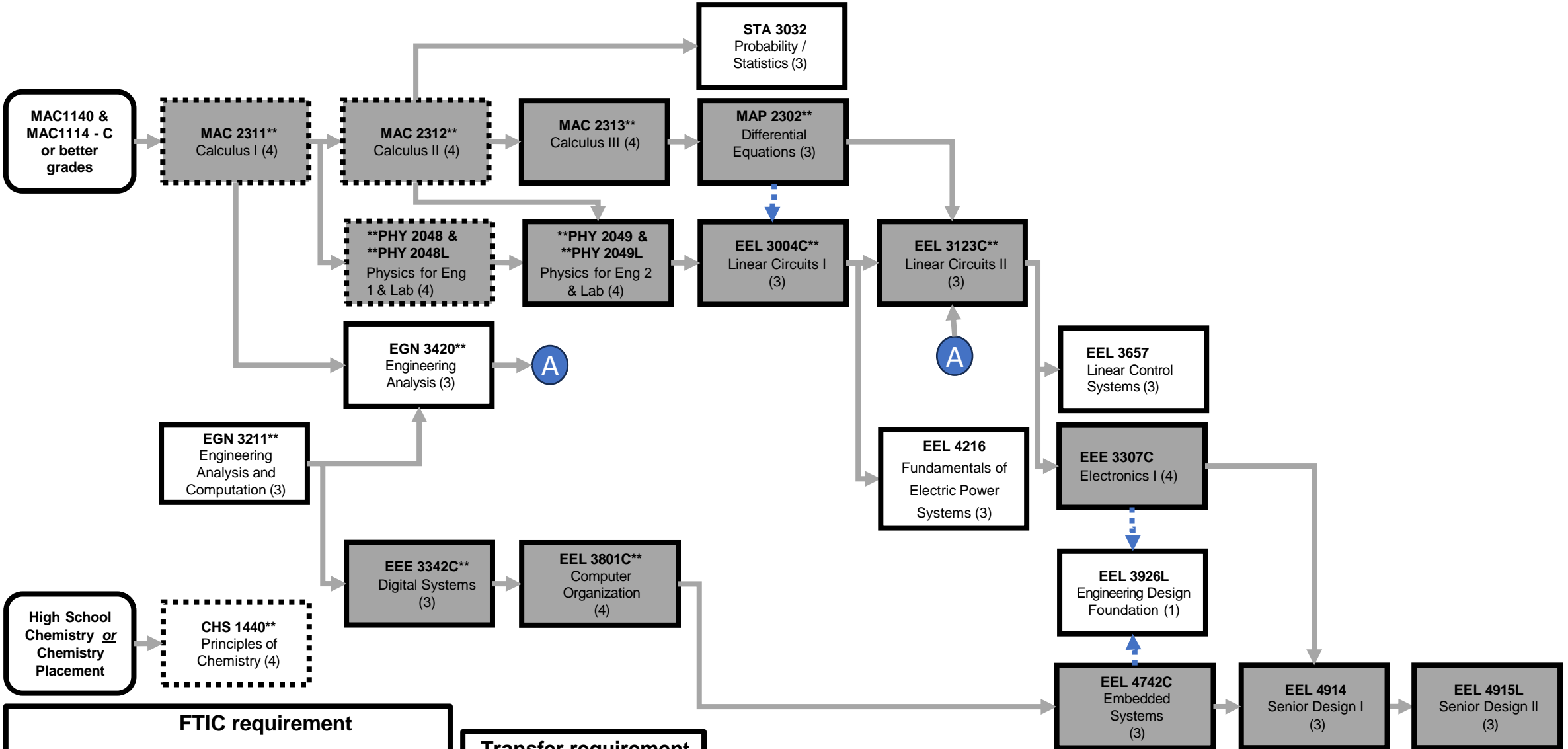


Electrical Engineering 2024-2025 Power & Renewable Energy Track



FTIC requirement

EGS 1006C Intro to Engineering (1)	EGN 1007C Engr. Concepts and Methods (1)	Tech Electives See Advisor (13-15)
--	--	--

Transfer requirement

Tech Electives See Advisor (15-17)
--

Select 2 Junior Electives

EEL 3552C Signal Anal & Analog Com (4) PR: EEL 3123C	EEL 3290 Global Energy Issues (3) PR: EEL 3004C
EEE 3350 Semiconductor Devices (3) PR: EEL 3004C	EEL 3470 Electromagnetic Fields (3) PR: EEL 3004C

Select 3 Senior Electives

EEL 4612C Robust Control (4) PR: EEL 3657	EEL 4750 DSP Fundamentals (3) PR: EEL 3123C
EEL 4294 Introduction to Smart Grids (3) PR: EEL 4216	EEL 4205 Electric Machinery (3) PR: EEL 3004C

KEY

PENDING REQUIREMENTS (dashed border)

CRITICAL PATH COURSES (shaded box)

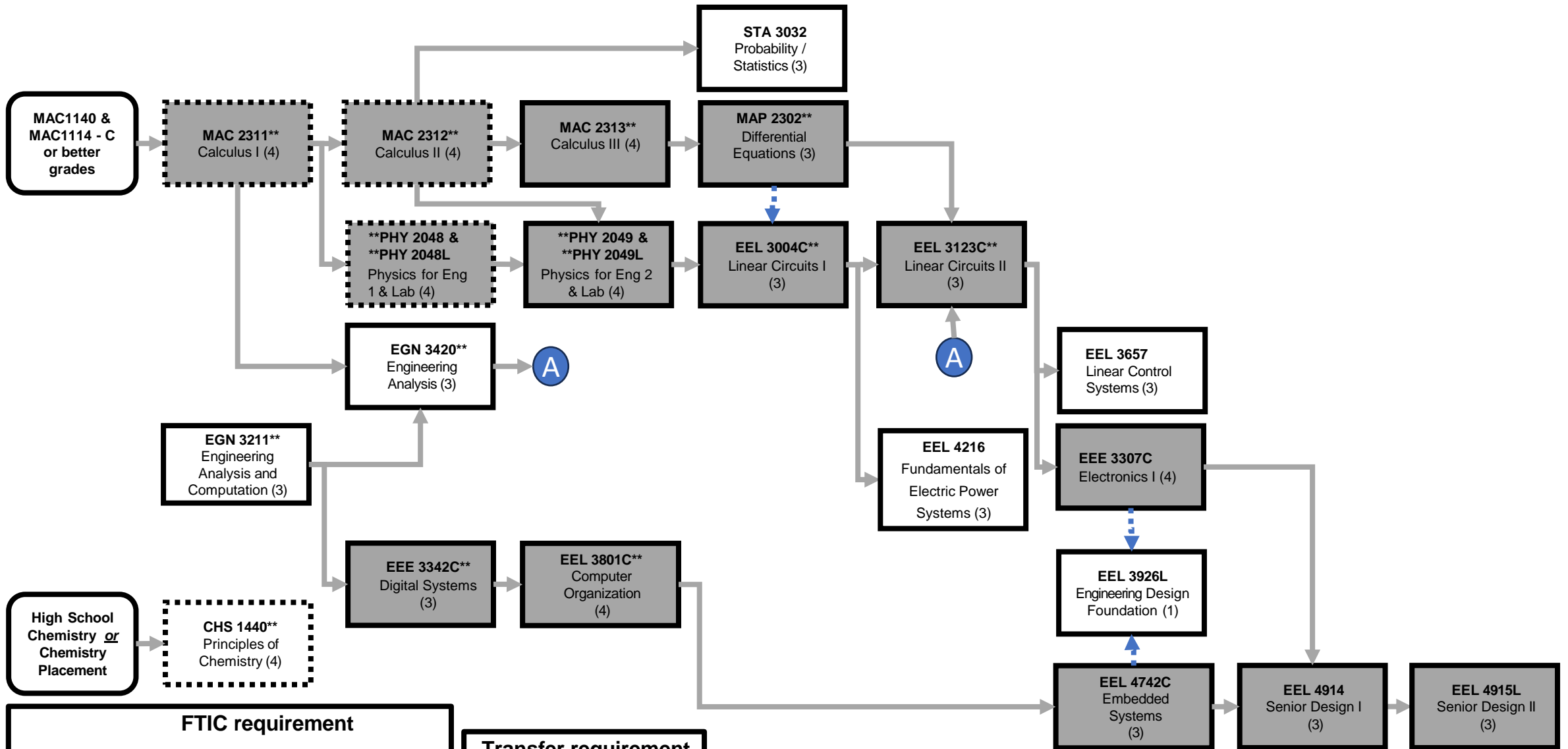
PREREQUISITE: (solid arrow)

COREQUISITE: (dotted arrow)

All courses with “**” require a grade of C (2.0) or better.

Electrical Engineering 2024-2025 Power & Renewable Energy Track

Semester 1 Semester 2 Semester 3 Semester 4 Semester 5 Semester 6 Semester 7 Semester 8



FTIC requirement

EGS 1006C Intro to Engineering (1)	EGN 1007C Engr. Concepts and Methods (1)	Tech Electives See Advisor (13-15)
--	--	--

Transfer requirement

Tech Electives See Advisor (15-17)
--

KEY PREREQUISITE: →

COREQUISITE: -.-→

PENDING REQUIREMENTS: -.- - -

CRITICAL PATH COURSES: (shaded box)

All courses with “**” require a grade of C (2.0) or better.

Select 2 Junior Electives

EEL 3552C Signal Anal & Analog Com (4) PR: EEL 3123C	EEL 3290 Global Energy Issues (3) PR: EEL 3004C
EEE 3350 Semiconductor Devices (3) PR: EEL 3004C	EEL 3470 Electromagnetic Fields (3) PR: EEL 3004C

Select 3 Senior Electives

EEL 4612C Robust Control (4) PR: EEL 3657	EEL 4750 DSP Fundamentals (3) PR: EEL 3123C
EEL 4294 Introduction to Smart Grids (3) PR: EEL 4216	EEL 4205 Electric Machinery (3) PR: EEL 3004C